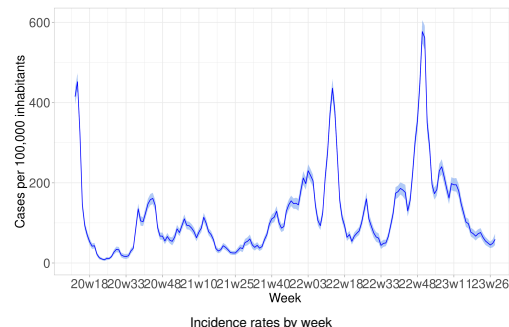
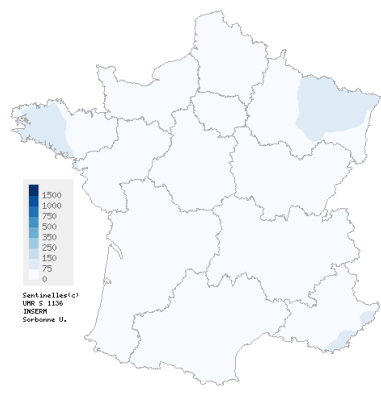


Observed situation in general practice for the week 28 of the year 2023, from 07/10/2023 to 07/16/2023

Acute Respiratory Infection (ARI)

Covid-19, Influenza and other respiratory viruses

Low activity in general practice



In mainland France, last week (2023w28), the incidence rate of ARI cases consulting in general practice was estimated at **59 cases per 100,000 inhabitants (95% CI [45 ; 73])**. This rate is **stable** compared to week 2023w27 (consolidated data: 49 CI [39 ; 59]).

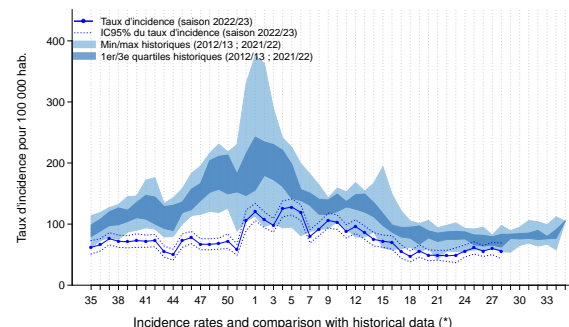
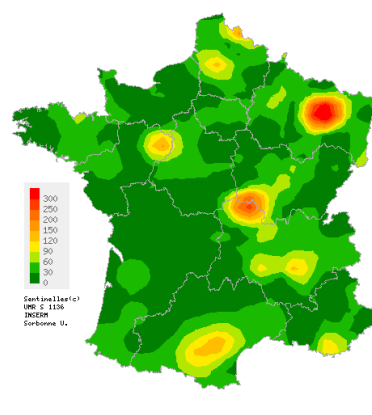
You will find more detailed information on ARI and Covid-19 on page 2.

Complete national and regional data are available on the last page of this bulletin.

ARI are caused by a variety of respiratory viruses including SARS-CoV-2 (Covid-19), influenza viruses, and other respiratory viruses such as RSV, rhinovirus and metapneumovirus. The purpose of ARI surveillance is to monitor outbreaks of these viruses.

Acute diarrhea

Low activity in general practice



In mainland France, last week (2023w28), the incidence rate of acute diarrhea cases seen in general practice was estimated at **56 cases per 100,000 inhabitants (95% CI [43 ; 69])**. This rate is **stable** compared to week 2023w27 (consolidated data: 60 [50 ; 70]) and at a **low activity level** compared with those usually observed at this time of year.

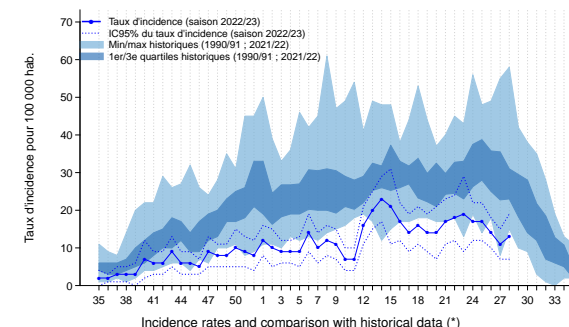
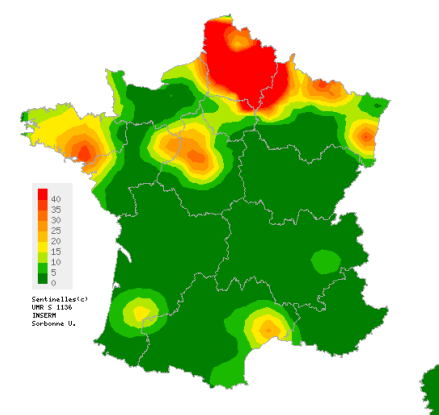
Complete national and regional data are available on the last page of this bulletin.

The purpose of acute diarrhea surveillance is to monitor gastroenteritis outbreaks.

(*) Incidences of acute diarrhea during the 2019/2020 and 2020/2021 seasons were greatly reduced by containment and sanitary measures to control the Covid-19 pandemic. They are not included in historical comparisons.

Chickenpox

Low activity in general practice



In mainland France, last week (2023w28), the incidence rate of Chickenpox cases seen in general practice was estimated at **13 cases per 100,000 inhabitants (95% CI [7 ; 19])**. This rate is **stable** compared to week 2023w27 (consolidated data: 11 [7 ; 15]) and at a **low activity level** compared to those usually observed at this time of the year.

Complete national and regional data are available on the last page of this bulletin.

(*) Incidences of Chickenpox cases during the 2019/2020 and 2020/2021 seasons were greatly reduced by the Covid-19 pandemic containment and health measures. They are not included in historical comparisons.

Observed situation in general practice for the week 28 of the year 2023, from 07/10/2023 to 07/16/2023

Additional data on acute respiratory infections

Modalities of ARI and Covid-19 monitoring by the Sentinelles network

Every year, viruses with respiratory tropism circulate in mainland France causing acute respiratory infections (ARI). These viruses are mainly influenza viruses, and other respiratory viruses such as respiratory syncytial virus (RSV), rhinovirus or metapneumovirus, but also SARS-CoV-2 (Covid-19) since 2020. They require close monitoring because they can be the cause of more or less severe epidemics.

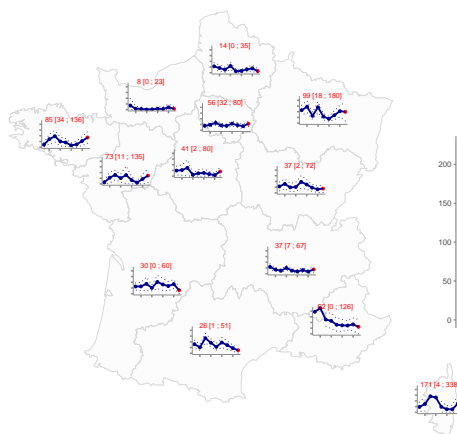
In order to carry out this surveillance in general practice, Sentinel general practitioners have been reporting the number of cases of ARI seen in consultation (or teleconsultation) since March 17, 2020, according to the following definition: **sudden onset of fever (or feeling of fever) and respiratory signs**.

For each patient presenting an ARI reported by Sentinel general practitioners, descriptive data are collected, including the results of diagnostic tests for Covid-19 (RT-PCR or antigenic test).

From this information, it is possible to estimate the number of Covid-19 cases with respiratory signs seen in general practice. These cases represent a majority share of all Covid-19 cases seen in general practice. However, it is important to note that Covid-19 cases without respiratory signs are not included in our estimates.

This indicator provides however comparable estimates over time to monitor the dynamics of the different epidemics (influenza, Covid-19, RSV).

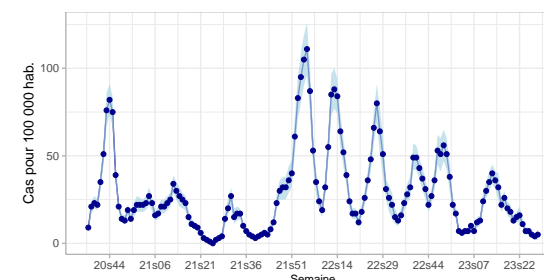
ARI incidence rates by regions



Weekly ARI incidence rates by regions over the last nine weeks

The regional ARI incidence rates estimated for the last week (2023w28) are available on the last page.

Estimated incidence of Covid-19 cases with respiratory signs

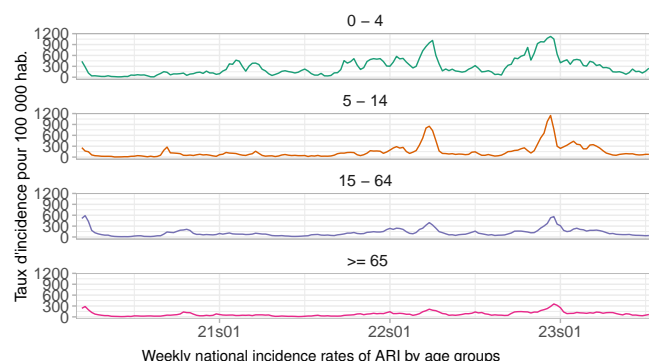


Incidence rate of Covid-19 cases with respiratory signs observed in general practice since 2020w37

Last week (2023w28), the incidence rate of Covid-19 cases with respiratory signs seen in general practice was estimated at **5 cases per 100,000 population (95% CI [2; 8])**, representing 3,419 [1,451; 5,387] new cases.

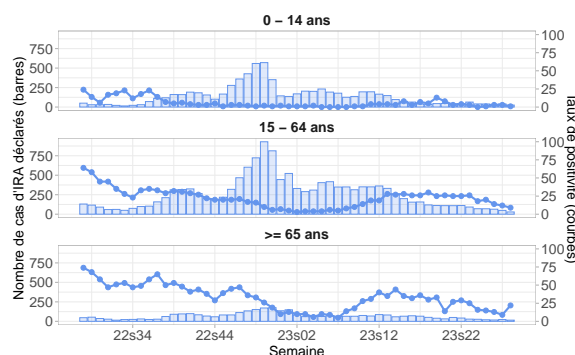
This rate is **stable** compared to the previous weeks (consolidated data for 2023w27: 4 [2; 5], representing 2,589 [1,644; 3,534] new cases).

ARI incidence rates by age groups



Last week (2023w28), incidence rates were **stable** in all age groups compared to the previous week.

ARI positivity rates to SARS-CoV-2 (Covid-19) by age groups



Number of ARI cases reported by Sentinelles physicians and SARS-CoV-2 (Covid-19) positivity rate since 2020w37

Last week (2023w28), the SARS-CoV-2 (Covid-19) positivity rates of patients consulting for ARI were **1%, 9%, and 22%** respectively in the 0-14, 15-64, and 65 and older age groups.

In conclusion

Last week (2023w28):

- The incidence of ARI cases seen in general practice was **stable** in all age groups compared to the previous week and at a **low level of activity** (see graphs opposite and in page 1).
- The incidence of Covid-19 cases with respiratory signs seen in general practice was **stable** compared to the previous week and at a **low level of activity** (see graph above).

You can find the epidemiological bulletin of Santé publique France with all the surveillance data (ambulatory and hospital) on Covid-19 by clicking [here](#).

Observed situation in general practice for the week 28 of the year 2023, from 07/10/2023 to 07/16/2023

National incidence rates over the last 3 weeks (per 100,000 inhabitants)	2023w28 (unconsolidated) Incidence rate estimations [95% confidence interval]	2023w27 Incidence rate estimations [95% confidence interval]	2023w26 Incidence rate estimations [95% confidence interval]
Acute Respiratory Infection	59 [45 ; 73]	49 [39 ; 59]	45 [37 ; 53]
Acute diarrhea	56 [43 ; 69]	60 [50 ; 70]	56 [47 ; 65]
Chickenpox	13 [7 ; 19]	11 [7 ; 15]	14 [10 ; 18]

Regional incidence rates for the week 2023w28 (per 100,000 inhabitants)	Acute Respiratory Infection Incidence rate estimations [95% confidence interval]	Acute diarrhea Incidence rate estimations [95% confidence interval]	Chickenpox Incidence rate estimations [95% confidence interval]
Auvergne-Rhône-Alpes	37 [7 ; 67]	59 [21 ; 97]	2 [0 ; 9]
Bourgogne-Franche-Comté	37 [2 ; 72]	21 [0 ; 49]	0 [0 ; 0]
Bretagne	85 [34 ; 136]	43 [7 ; 79]	23 [0 ; 52]
Centre-Val de Loire	41 [2 ; 80]	22 [0 ; 48]	11 [0 ; 28]
Corse	171 [4 ; 338]	63 [0 ; 165]	5 [0 ; 23]
Grand Est	99 [18 ; 180]	92 [11 ; 173]	17 [0 ; 40]
Hauts-de-France	14 [0 ; 35]	96 [44 ; 148]	50 [0 ; 111]
Ile-de-France	56 [32 ; 80]	42 [18 ; 66]	11 [0 ; 24]
Normandie	8 [0 ; 23]	6 [0 ; 19]	0 [0 ; 0]
Nouvelle-Aquitaine	30 [0 ; 60]	24 [0 ; 49]	2 [0 ; 7]
Occitanie	26 [1 ; 51]	46 [10 ; 82]	10 [0 ; 25]
Pays de la Loire	73 [11 ; 135]	45 [1 ; 89]	7 [0 ; 23]
Provence-Alpes-Côte d'Azur	62 [0 ; 126]	33 [0 ; 72]	0 [0 ; 0]

French Sentinel network

Pierre Louis Institute of Epidemiology and Public Health

UMR-S 1136 (Inserm - Sorbonne Université)

Phone : +33 144 738 435 | E-mail : sentinelles@upmc.fr

Since 1984, the "réseau Sentinelles" or Sentinelles network has been a research and health monitoring network in primary care (general medicine and paediatrics) in metropolitan France. The participation of physicians is voluntary. Currently, 559 physicians participate in the continuous surveillance activity (514 general practitioners and 45 paediatricians), allowing the production of weekly epidemiological reports.

Heads of Sentinel Network : Olivier Steichen, Thierry Blanchon

Publication : Yves Dorléans

Information system & biostatistics : Clément Turbelin

Monitoring manager : Marion Debin, Caroline Guerrisi

Regional branches	Heads
Auvergne-Rhône-Alpes, Bourgogne-Franche-Comté	Marianne Sarazin
Centre-Val de Loire, Pays de la Loire	Thierry Prazuck
Corse	Alessandra Falchi
PACA	David Darmon
Grand Est	Daouda Niaré
Ile-de-France, Hauts-de-France	Mathilde François
Bretagne, Normandie	Marie Pouquet
Nouvelle-Aquitaine, Occitanie	Maryse Lapeyre-Mestre

[See all the team](#)

Need more information?

Visit our website :

<https://www.sentiweb.fr/>

You are a french GP ?

Contact us

<https://www.sentiweb.fr/france/fr/inscrire>

Envie de participer à la veille sanitaire ?

covidnet.fr

Devenez acteur de la surveillance du Covid-19 !

Pas besoin d'être malade pour participer !

Inscrivez-vous sur <https://www.covidnet.fr/>