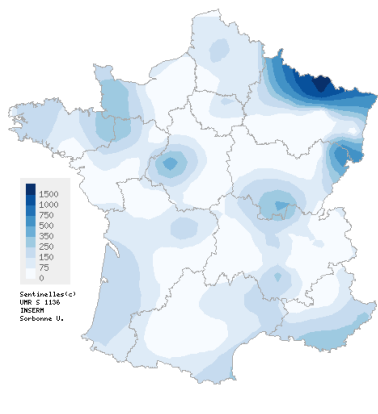


Observed situation in general practice for the week 38 of the year 2022, from 09/19/2022 to 09/25/2022

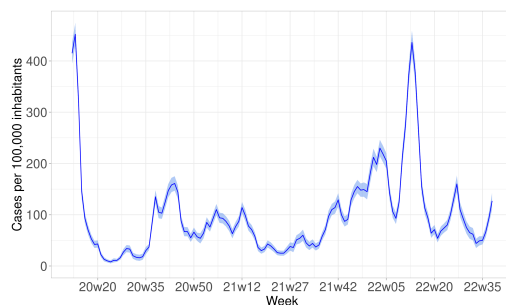
Acute Respiratory Infection (ARI)

Covid-19, Influenza and other respiratory viruses

Moderate activity in general practice



Spatial interpolation map of incidence rates at department level



Incidence rates by week

In mainland France, last week (2022w38), the incidence rate of ARI cases consulting in general practice was estimated at **127 cases per 100,000 inhabitants (95% CI [111 ; 143])**. This rate is **increasing** compared to week 2022w37 (consolidated data: 93 [82 ; 104]).

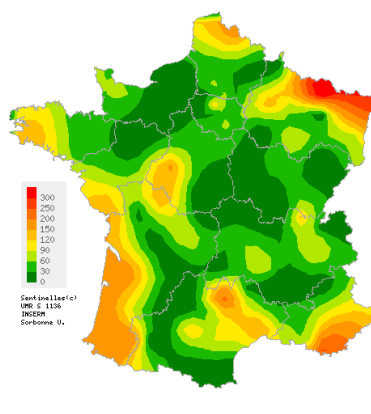
- Data on Covid-19: page 2

- Complete national and regional data: page 3

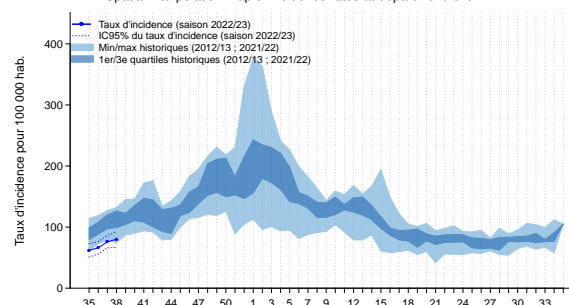
ARI are caused by a variety of respiratory viruses including SARS-CoV-2 (Covid-19), influenza viruses, and other respiratory viruses such as RSV, rhinovirus and metapneumovirus. The purpose of ARI surveillance is to monitor outbreaks of these virus.

Acute diarrhea

Low activity in general practice



Spatial interpolation map of incidence rates at department level



Incidence rates and comparison with historical data (*)

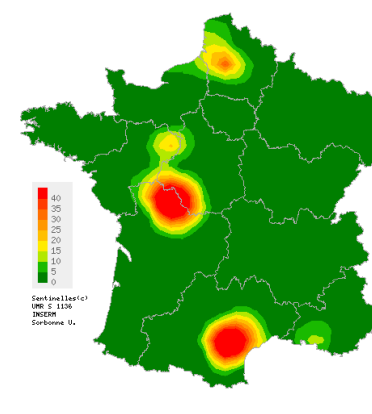
In mainland France, last week (2022w38), the incidence rate of acute diarrhea cases seen in general practice was estimated at **80 cases per 100,000 inhabitants (95% CI [67 ; 93])**. This rate is **stable** compared to week 2022w37 (consolidated data: 76 [66 ; 86]) and at a level of activity below those usually observed in this period.

Complete national and regional data are available on the last page of this bulletin.

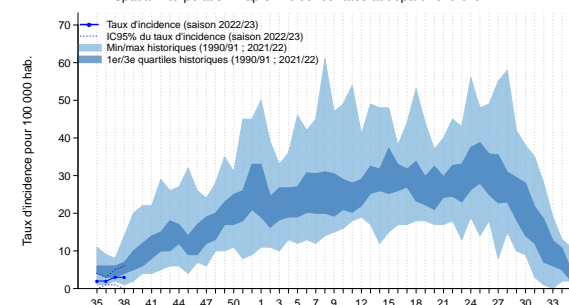
The purpose of acute diarrhea surveillance is to monitor gastroenteritis outbreaks.

Chickenpox

Low activity in general practice



Spatial interpolation map of incidence rates at department level



Incidence rates and comparison with historical data (*)

In mainland France, last week (2022w38), the incidence rate of Chickenpox cases seen in general practice was estimated at **3 cases per 100,000 inhabitants (95% CI [0 ; 6])**. This rate is **stable** compared to week 2022w37 (consolidated data: 3 CI [1 ; 5]) and at a level of activity below those usually observed in this period.

Complete national and regional data are available on the last page of this bulletin.

Observed situation in general practice for the week 38 of the year 2022, from 09/19/2022 to 09/25/2022

COVID-19

Modalities of Covid-19 monitoring by the Sentinelles Network

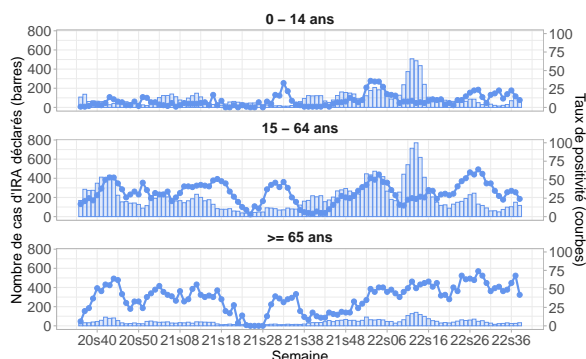
The Sentinel network contributes to the monitoring of the dynamics of the Covid-19 epidemic through the surveillance of cases of acute respiratory infection (ARI) seen in general practice (*defined as a fever or a feeling of fever accompanied by respiratory signs*).

For each patient presenting an ARI reported by Sentinel general practitioners, descriptive data are collected, including the results of diagnostic tests for Covid-19 (RT-PCR or antigenic test).

From this information, it is possible to estimate the number of Covid-19 cases with respiratory signs seen in general practice. These cases represent a majority share of all Covid-19 cases seen in general practice. However, it is important to note that Covid-19 cases without respiratory signs are not included in our estimates (such as those with only isolated ageusia or anosmia).

This indicator provides comparable estimates over time to monitor the dynamics of the epidemic.

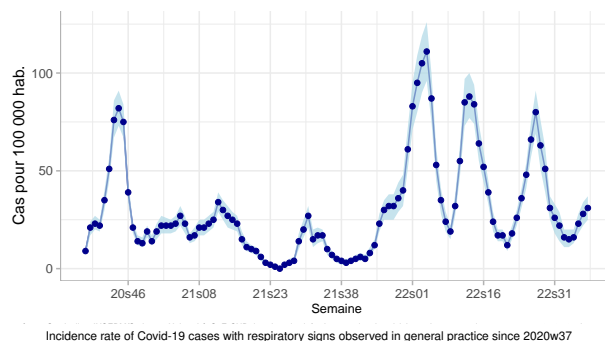
ARI positivity rates to SARS-CoV-2 (Covid-19) by age groups



Number of ARI cases reported by Sentinelles physicians and SARS-CoV-2 (Covid-19) positivity rate since 2020w37

In week 2022w38, the SARS-CoV-2 (Covid-19) positivity rates of patients consulting for ARI were 10%, 24%, and 42% respectively in the 0-14, 15-64, and 65 and older age groups.

Estimated incidence of Covid-19 cases with respiratory signs



Incidence rate of Covid-19 cases with respiratory signs observed in general practice since 2020w37

In week 2022w38, the incidence rate of Covid-19 cases with respiratory signs seen in general practice was estimated at 31 cases per 100,000 population (95% CI [25; 37]), corresponding to 20,693 [16,531; 24,855] new cases of Covid-19 with respiratory signs seen in general practice.

This rate has been slightly increasing compared to those in recent weeks (consolidated data for 2022w37: 28 [22; 34], representing 18,622 [14,911; 22,333] new cases of Covid-19 with respiratory signs seen in general practice).

Clinical description of Covid-19 cases with respiratory signs

Since week 2022w21 (date of the beginning of the seventh wave due to infections by the BA.4 and BA.5 sublineages of the Omicron variant), the 1,544 Covid-19 cases with respiratory signs seen by the Sentinel general practitioners had the following characteristics:

- Their median age was 51 years (range from 3 months to 105 years) and 58% (883/1,521) were women;
- 16% (210/1,344) of cases aged 12 years and older were not vaccinated against Covid-19 (no vaccine dose received);
- 28% (361/1,281) had risk factors for complications;
- 1% (13/1,287) were hospitalized after their consultations.

In conclusion

The incidence of Covid-19 cases with respiratory signs seen in general practice has been slightly increasing since week 2022w34. The marked increase in the activity of acute respiratory infections (see page 1) is probably explained by the concomitant circulation of different respiratory viruses, including the SARS-CoV-2 virus (see opposite column).

You can find the epidemiological bulletin of Santé publique France with all the surveillance data (ambulatory and hospital) on the Covid-19 pandemic by clicking [here](#).

Observed situation in general practice for the week 38 of the year 2022, from 09/19/2022 to 09/25/2022

National incidence rates over the last 3 weeks (per 100,000 inhabitants)	2022w38 (unconsolidated) Incidence rate estimations [95% confidence interval]	2022w37 Incidence rate estimations [95% confidence interval]	2022w36 Incidence rate estimations [95% confidence interval]
Acute Respiratory Infection	127 [111 ; 143]	93 [82 ; 104]	66 [56 ; 76]
Acute diarrhea	80 [67 ; 93]	76 [66 ; 86]	66 [56 ; 76]
Chickenpox	3 [0 ; 6]	3 [1 ; 5]	2 [1 ; 3]

Regional incidence rates for the week 2022w38 (per 100,000 inhabitants)	Acute Respiratory Infection Incidence rate estimations [95% confidence interval]	Acute diarrhea Incidence rate estimations [95% confidence interval]	Chickenpox Incidence rate estimations [95% confidence interval]
Auvergne-Rhône-Alpes	89 [56 ; 122]	48 [22 ; 74]	0 [0 ; 0]
Bourgogne-Franche-Comté	159 [82 ; 236]	19 [0 ; 48]	0 [0 ; 0]
Bretagne	188 [117 ; 259]	66 [29 ; 103]	0 [0 ; 1]
Centre-Val de Loire	160 [68 ; 252]	69 [0 ; 141]	0 [0 ; 0]
Corse	0 [0 ; 0]	0 [0 ; 0]	0 [0 ; 0]
Grand Est	456 [254 ; 658]	162 [50 ; 274]	0 [0 ; 0]
Hauts-de-France	102 [51 ; 153]	119 [66 ; 172]	4 [0 ; 11]
Ile-de-France	110 [80 ; 140]	64 [40 ; 88]	0 [0 ; 1]
Normandie	68 [20 ; 116]	17 [0 ; 41]	0 [0 ; 0]
Nouvelle-Aquitaine	106 [61 ; 151]	114 [65 ; 163]	7 [0 ; 20]
Occitanie	98 [48 ; 148]	89 [44 ; 134]	6 [0 ; 18]
Pays de la Loire	68 [23 ; 113]	54 [9 ; 99]	5 [0 ; 16]
Provence-Alpes-Côte d'Azur	236 [122 ; 350]	114 [37 ; 191]	6 [0 ; 25]

French Sentinel network

Pierre Louis Institute of Epidemiology and Public Health

UMR-S 1136 (Inserm - Sorbonne Université)

Phone : +33 144 738 435 | E-mail : sentinelles@upmc.fr

Since 1984, the "réseau Sentinelles" or Sentinelles network has been a research and health monitoring network in primary care (general medicine and paediatrics) in metropolitan France. The participation of physicians is voluntary. Currently, 601 physicians participate in the continuous surveillance activity (560 general practitioners and 41 paediatricians), allowing the production of weekly epidemiological reports.

Heads of Sentinel Network : Olivier Steichen, Thierry Blanchon

Publication : Yves Dorléans

Information systems & biostatistics : Ibrahima Camara, Olivier Garcia, Titouan Launay, Clément Turbelin, Ana Vilcu

Monitoring manager : Thomas Hanslik, Caroline Guerrisi, Louise Rossignol

Regional branch	Heads & Epidemiologists/Animators
Auvergne-Rhône-Alpes, Bourgogne-Franche-Comté	Marianne Sarazin Caroline Liotard
Centre-Val de Loire, Pays de la Loire, Bretagne	Thierry Prazuck Charly Kengne-Kuetche, Marie Pouquet
Corse, PACA	Alessandra Falchi Shirley Masse, Julie Sevila
Grand Est	Daouda Niaré
Ile-de-France, Hauts-de-France	Mathilde François Camille Bonnet, Hayat Benamar
Normandie	Justine Ducher
Nouvelle-Aquitaine, Occitanie	Maryse Lapeyre-Mestre Marion Debin, Yves Dorléans

Need more information?

Visit our website :

<https://www.sentiweb.fr/>

You are a french GP ?

Contact us

<https://www.sentiweb.fr/france/fr/inscrire>

Envie de participer à la veille sanitaire ?

covidnet.fr

Devenez acteur de la surveillance du Covid-19 !
Pas besoin d'être malade pour participer !
Inscrivez-vous sur <https://www.covidnet.fr/>