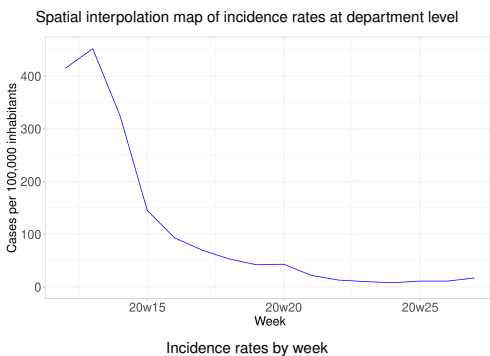
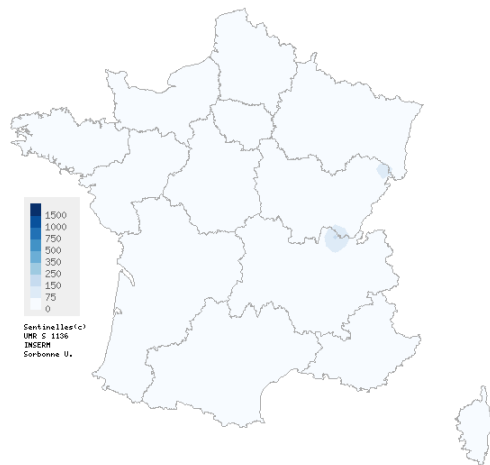


Observed situation for the week 27 of the year 2020, from 06/29/2020 to 07/05/2020

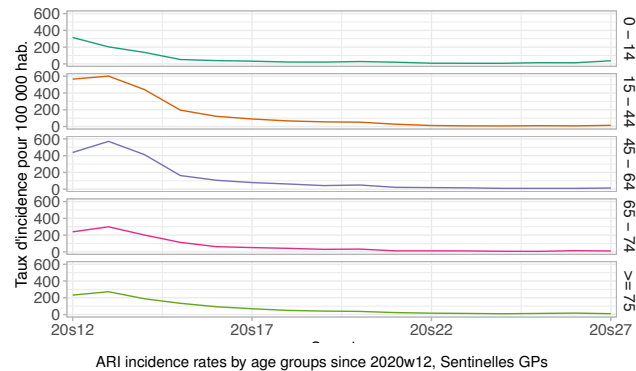
**Primary Care Surveillance**

**Acute Respiratory Infection (ARI)**  
Low activity in general practice



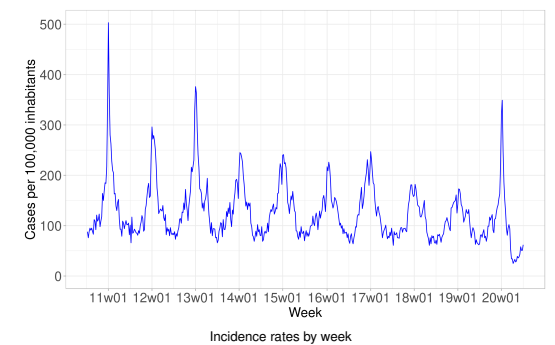
**In metropolitan France**, last week (2020w27), the incidence rate of ARI consulting (or teleconsulting) in general practice was estimated at 17 cases per 100,000 inhabitants (95% CI [12; 22]). This estimate is stable compared to week 2020w26) (consolidated data : 11 [8; 14]).  
*Complete national and regional data are available on the last page of this bulletin.*

**ARI - Additional data**  
ARI case description



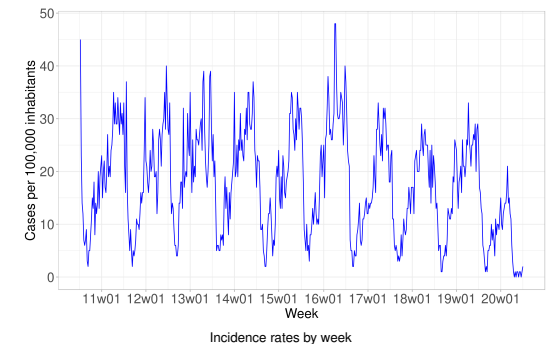
- In week 2020w27 :
- The median age of ARI cases reported by Sentinelles GPs was 29 years (from 6 months to 95 years) and males accounted for 46.5% of cases.
  - Incidence rates remain low and stable in all age groups.
  - 4.3% of ARI consultations were carried out by teleconsultation (10.9% in week 2020w26).
  - Hospitalisation rate following a consultation was 5.4% [0.0 ; 13.1] (compared to 8% [0.0 ; 16.3] in week 2020w26).

**Acute diarrhea**  
Low activity in general practice



The incidence rate of acute diarrhea cases seen in general practice in week 2020w27 is stable compared to the previous week.  
*Complete national and regional data are available on the last page of this bulletin.*

**Chickenpox**  
Low activity in general practice



The incidence rate of chickenpox cases seen in general practice in week 2020w27 is stable compared to the previous week.  
*Complete national and regional data are available on the last page of this bulletin.*

Observed situation for the week 27 of the year 2020, from 06/29/2020 to 07/05/2020

National incidence rates over the last 3 weeks (per 100,000 inhabitants)	2020w27 (unconsolidated)	2020w26	2020w25
	Incidence rate estimations [95% confidence interval]	Incidence rate estimations [95% confidence interval]	Incidence rate estimations [95% confidence interval]
Acute Respiratory Infection	17 [12 ; 22]	11 [8 ; 14]	11 [7 ; 15]
Acute diarrhea	62 [51 ; 73]	51 [43 ; 59]	51 [44 ; 58]
Chickenpox	2 [0 ; 4]	1 [0 ; 2]	0 [0 ; 1]

Regional incidence rates for the week 2020w27 (per 100,000 inhabitants)	Acute Respiratory Infection	Acute diarrhea	Chickenpox
	Incidence rate estimations [95% confidence interval]	Incidence rate estimations [95% confidence interval]	Incidence rate estimations [95% confidence interval]
Auvergne-Rhône-Alpes	27 [9 ; 45]	56 [30 ; 82]	6 [0 ; 16]
Bourgogne-Franche-Comté	21 [0 ; 46]	26 [1 ; 51]	0 [0 ; 0]
Bretagne	28 [0 ; 57]	49 [18 ; 80]	0 [0 ; 0]
Centre-Val de Loire	6 [0 ; 18]	45 [12 ; 78]	0 [0 ; 0]
Corse	13 [0 ; 39]	45 [0 ; 103]	0 [0 ; 0]
Grand Est	1 [0 ; 4]	94 [46 ; 142]	0 [0 ; 0]
Hauts-de-France	4 [0 ; 11]	97 [33 ; 161]	0 [0 ; 0]
Ile-de-France	9 [0 ; 18]	33 [12 ; 54]	2 [0 ; 6]
Normandie	39 [0 ; 88]	39 [11 ; 67]	7 [0 ; 20]
Nouvelle-Aquitaine	5 [0 ; 14]	63 [29 ; 97]	2 [0 ; 8]
Occitanie	28 [1 ; 55]	64 [27 ; 101]	0 [0 ; 0]
Pays de la Loire	6 [0 ; 17]	53 [5 ; 101]	4 [0 ; 11]
Provence-Alpes-Côte d'Azur	10 [0 ; 26]	130 [39 ; 221]	0 [0 ; 0]

## French Sentinel network

### Pierre Louis Institute of Epidemiology and Public Health

UMR-S 1136 (Inserm - Sorbonne Université)

Phone : +33 144 738 435 | E-mail : [sentinelles@upmc.fr](mailto:sentinelles@upmc.fr)

Since 1984, the "réseau Sentinelles" or Sentinelles network has been a research and health monitoring network in primary care (general medicine and paediatrics) in metropolitan France. The participation of physicians is voluntary. Currently, 745 physicians participate in the continuous surveillance activity (670 general practitioners and 75 paediatricians), allowing the production of weekly epidemiological reports.

**Heads of Sentinel Network** : Thomas Hanslik, Thierry Blanchon

**Publication** : Yves Dorléans

**Information systems & biostatistics** : Corentin Hervé, Titouan Launay, Cécile Souty, Clément Turbelin, Ana Vilcu

**Monitoring manager** : Louise Rossignol, Caroline Guerrisi

Regional branch	Heads & Epidemiologists/Animators
Auvergne-Rhône-Alpes, Bourgogne-Franche-Comté	<b>Marianne Sarazin</b> Caroline Liotard
Centre-Val de Loire, Pays de la Loire, Bretagne	<b>Thierry Prazuck</b> Charly Kengne-Kuetche, Marie Pouquet
Corse, PACA	<b>Alessandra Falchi</b> Shirley Masse, Natacha Villechenaud
Grand Est	Daouda Niaré
Ile-de-France, Hauts-de-France	<b>Mathilde François</b> Camille Bonnet, Jennifer Morice
Nouvelle-Aquitaine, Occitanie	Marion Debin

### Need more information ?

Visit our website :

<https://www.sentiweb.fr/>

### You are a french GP ?

Contact us

<https://www.sentiweb.fr/france/fr/inscrire>

### Envie de participer à la veille sanitaire ?

**covidnet.fr**

Devenez acteur de la surveillance du Covid-19!

Pas besoin d'être malade pour participer!

Inscrivez-vous sur <https://www.covidnet.fr/>