

Sentinelles network report from 08/08/2018, n° 2018w31 (data from 07/30/2018 to 08/05/2018)

## ACUTE DIARRHEA

### Moderate activity in general practice

In metropolitan France, last week (2018w31), the incidence rate of Acute diarrhoea seen in general practice was estimated at 87 cases per 100,000 inhabitants (95% CI [70 ; 104]), below the epidemic threshold (104 cases per 100,000 inhabitants) [1].

At the regional level, the highest incidence rates were noted in: Provence-Alpes-Côte d'Azur (211 cases per 100,000 inhabitants, 95% CI [72 ; 350]), Ile-de-France (163, 95% CI [7 ; 319]) and Occitanie (126, 95% CI [63 ; 189]).\*

[More information about Acute Diarrhoea Sentinelles surveillance](#)

## CHICKENPOX

### Low activity in general practice

In metropolitan France, last week (2018w31), the incidence rate of Chickenpox seen in general practice was estimated at 11 cases per 100,000 inhabitants (95% CI [5 ; 17]).

No significant activity at the regional level was reported.\*

[More information about Chickenpox Sentinelles surveillance](#)

## INFLUENZA-LIKE ILLNESS

### Low activity in general practice

In metropolitan France, last week (2018w31), the incidence rate of Influenza-like illness seen in general practice was estimated at 4 cases per 100,000 inhabitants (95% CI [0 ; 8]).

At the regional level, the highest incidence rates were noted in: Corse (27 cases per 100,000 inhabitants, 95% CI [0 ; 76]) and Bretagne (23, 95% CI [0 ; 56]).\*

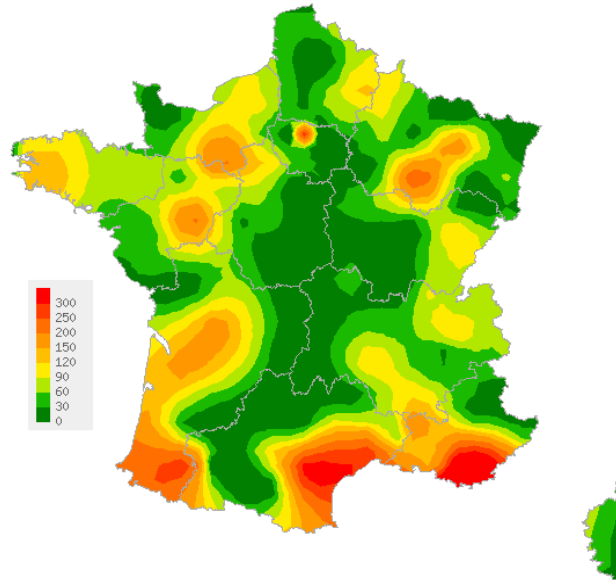
[More information about Influenza-like illness Sentinelles surveillance](#)

[Information about Sentinelles network statistical methods \(in french\)](#)

\* The regional data are presented at the end of this report.

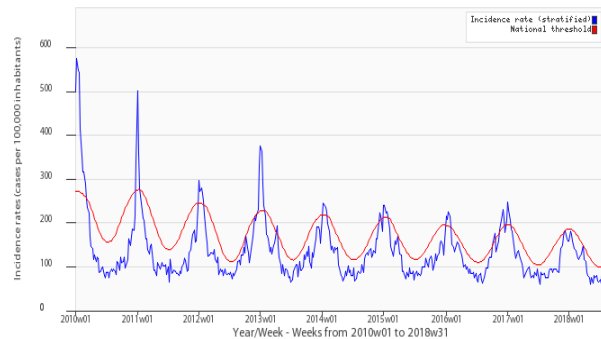
[1] Costagliola D, et al. A routine tool for detection and assessment of epidemics of influenza-like syndromes in France. *Am J Public Health.* 1991;81(1):97-9.

## ACUTE DIARRHEA



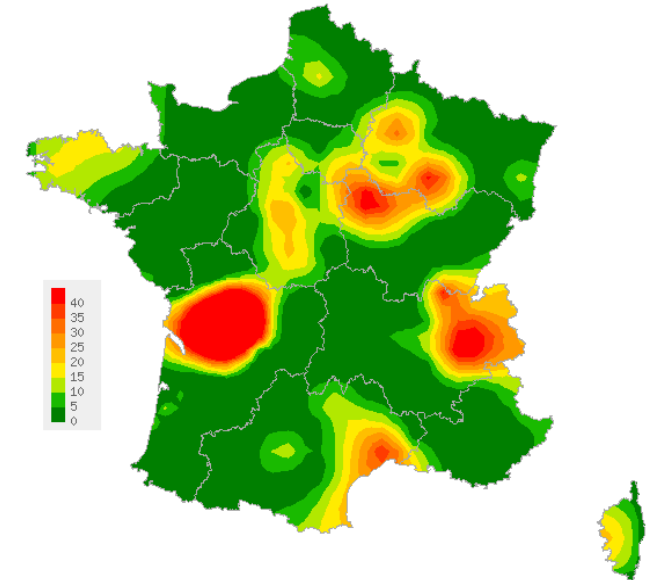
Map of spatial data interpolation based on incidence rates at the « departement » (NUTS 3) level, (per 100,000 inhabitants), Acute diarrhoea, Sentinelles general practitioners, 2018w31  
[Maps available at http://www.sentiweb.fr](http://www.sentiweb.fr)

Sentinelles Network, Acute diarrhoea, Metropolitan France



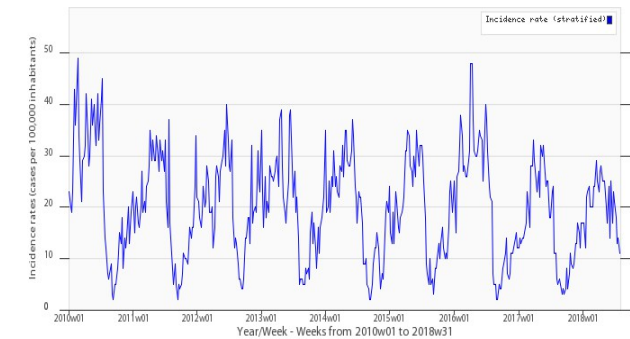
Incidence rate in blue, epidemic threshold in red calculated by a periodic regression model [1] (per 100,000 inhabitants), Acute diarrhoea, Sentinelles general practitioners

## CHICKENPOX



Map of spatial data interpolation based on incidence rates at the « departement » (NUTS 3) level, (per 100,000 inhabitants), Chickenpox, Sentinelles general practitioners, 2018w31  
[Maps available at http://www.sentiweb.fr](http://www.sentiweb.fr)

Sentinelles Network, Chickenpox, Metropolitan France



Incidence rate in blue, (per 100,000 inhabitants), Chickenpox, Sentinelles general practitioners

National incidence rates (per 100,000 inhabitants) over the past 3 weeks	2018w31 (non consolidated)	2018w30	2018w29
	Incidence rate estimation [95% confidence interval]	Incidence rate estimation [95% confidence interval]	Incidence rate estimation [95% confidence interval]
INFLUENZA-LIKE ILLNESS	4 [0 ; 8]	3 [0 ; 6]	3 [0 ; 6]
ACUTE DIARRHEA	87 [70 ; 104]	80 [66 ; 94]	82 [68 ; 96]
CHICKENPOX	11 [5 ; 17]	14 [9 ; 19]	13 [8 ; 18]

Table 1 : Incidence rates\* estimation with 95% confidence interval, for each indicator, in France, over the past 3 weeks .

Regional incidence rates for week 2018w31 (per 100,000 inhabitants)	INFLUENZA-LIKE ILLNESS	ACUTE DIARRHEA	CHICKENPOX
	Incidence rate estimation [95% confidence interval]	Incidence rate estimation [95% confidence interval]	Incidence rate estimation [95% confidence interval]
Auvergne-Rhône-Alpes	0 [0 ; 0]	57 [23 ; 91]	17 [0 ; 37]
Bourgogne-Franche-Comté	0 [0 ; 0]	41 [0 ; 83]	7 [0 ; 20]
Bretagne	23 [0 ; 56]	94 [16 ; 172]	7 [0 ; 22]
Centre-Val de Loire	0 [0 ; 0]	33 [3 ; 63]	10 [0 ; 25]
Corse	27 [0 ; 76]	49 [0 ; 111]	12 [0 ; 44]
Grand Est	0 [0 ; 0]	62 [30 ; 94]	7 [0 ; 18]
Hauts-de-France	0 [0 ; 0]	49 [0 ; 113]	2 [0 ; 8]
Ile-de-France	3 [0 ; 7]	163 [7 ; 319]	2 [0 ; 6]
Normandie	3 [0 ; 14]	95 [0 ; 202]	0 [0 ; 0]
Nouvelle-Aquitaine	0 [0 ; 0]	110 [38 ; 182]	11 [0 ; 26]
Occitanie	0 [0 ; 0]	126 [63 ; 189]	15 [0 ; 37]
Pays de la Loire	0 [0 ; 0]	87 [19 ; 155]	0 [0 ; 0]
Provence-Alpes-Côte d'Azur	3 [0 ; 11]	211 [72 ; 350]	1 [0 ; 6]

Table 2 : Incidence rates\* estimation with 95% confidence interval, for each indicator, for each French region, for week 2018w31.

## Réseau Sentinelles

### Inserm - Sorbonne Université UMR-S 1136

Institut Pierre Louis d'Epidémiologie et de Santé Publique (IPLESP)  
 Sorbonne-Université, site Saint-Antoine  
 27, rue Chaligny / 75571 Paris cedex 12  
 Phone. : 01 44 73 84 35 / Fax : 01 44 73 84 54  
 Email : [sentinelles@upmc.fr](mailto:sentinelles@upmc.fr)

*The " Réseau Sentinelles" or Sentinelles Network  
 (a.k.a. French Communicable Diseases Computer Network)  
 is a network of 1450 physicians working throughout the metropolitan regions of  
 France including 584 involved in the clinical surveillance activity  
 (465 general practitioners and 119 pediatricians)  
 enabling the achievement of weekly newsletters.  
 This network is developed within an agreement  
 between Inserm, Sorbonne Université and Santé publique France.*

**Head of RS:** Thomas Hanslik  
**Deputy head of RS:** Thierry Blanchon  
**Monitoring managers:** Marion Debin, Caroline Guerrisi, Louise Rossignol,  
 Laetitia Vaillant  
**Information systems, biostatistics:** Corentin Hervé, Titouan Launay, Cécile  
 Souty, Clément Turbelin, Ana Vilcu  
**Publication:** Yves Dorléans, Corentin Hervé

Regional branch	Head of network	Regional manager
Auvergne-Rhône-Alpes / Bourgogne-Franche-Comté	Marianne Sarazin	Caroline Liotard
Centre Val de Loire / Hauts-de-France	Thierry Prazuck	Charly Kengne- Kuetche Mathieu Rivière
Ile-de-France	Mathilde François	Lucie Fournier
Méditerranée : Corse / Occitanie / Provence-Alpes-Côte d'Azur	Jean-Pierre Amoros Alessandra Falchi	Shirley Masse Natacha Villechenaud

## Need information ?

You can visit our website :

<http://www.sentiweb.fr>

These information are also available by using our RSS feed :

<http://www.sentiweb.fr/rss/fr/en>

You can also contact us using the above contact information.

\* Incidence rates estimate are calculated on the activity of general practitioners.