

Sentinelles network report from 07/11/2018, n° 2018w27 (data from 07/02/2018 to 07/08/2018)

CHICKENPOX

Moderate activity in general practice

In metropolitan France, last week (2018w27), the incidence rate of Chickenpox seen in general practice was estimated at 24 cases per 100,000 inhabitants (95% CI [16 ; 32]).

Nine regional clusters were reported, high in Bretagne (112 cases per 100,000 inhabitants, 95% CI [0 ; 309]), Provence-Alpes-Côte d'Azur (70, 95% CI [0 ; 164]), Grand Est (55, 95% CI [0 ; 111]), Hauts-de-France (41, 95% CI [0 ; 98]) and Normandie (40, 95% CI [0 ; 85]) and moderate in Auvergne-Rhône-Alpes (35, 95% CI [10 ; 60]), Corse (28, 95% CI [0 ; 62]), Bourgogne-Franche-Comté (27, 95% CI [1 ; 53]) and Occitanie (25, 95% CI [0 ; 73]). *

[More information about Chickenpox Sentinelles surveillance](#)

ACUTE DIARRHEA

Moderate activity in general practice

In metropolitan France, last week (2018w27), the incidence rate of Acute diarrhoea seen in general practice was estimated at 86 cases per 100,000 inhabitants (95% CI [70 ; 102]), below the epidemic threshold (99 cases per 100,000 inhabitants) [1].

At the regional level, the highest incidence rates were noted in: Provence-Alpes-Côte d'Azur (161 cases per 100,000 inhabitants, 95% CI [12 ; 310]), Grand Est (122, 95% CI [57 ; 187]) and Normandie (122, 95% CI [47 ; 197]). *

[More information about Acute Diarrhoea Sentinelles surveillance](#)

INFLUENZA-LIKE ILLNESS

Low activity in general practice

In metropolitan France, last week (2018w27), the incidence rate of Influenza-like illness seen in general practice was estimated at 6 cases per 100,000 inhabitants (95% CI [2 ; 10]).

At the regional level, the highest incidence rates were noted in: Bretagne (34 cases per 100,000 inhabitants, 95% CI [0 ; 85]), Grand Est (25, 95% CI [1 ; 49]) and Centre-Val de Loire (7, 95% CI [0 ; 21]). *

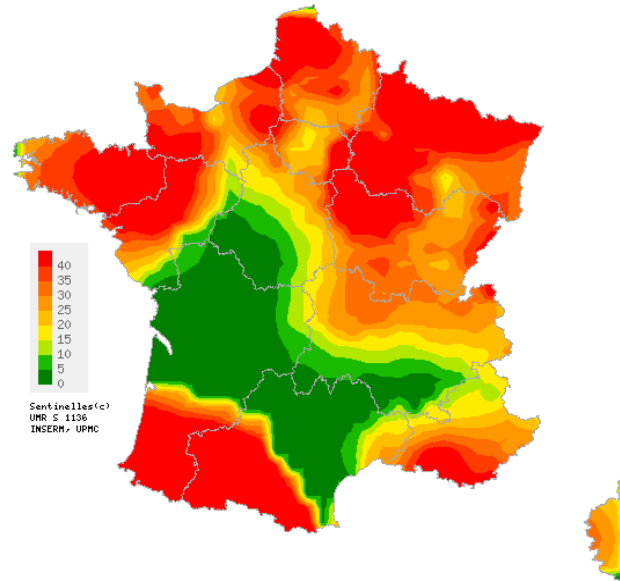
[More information about Influenza-like illness Sentinelles surveillance](#)

[Information about Sentinelles network statistical methods \(in french\)](#)

* The regional data are presented at the end of this report.

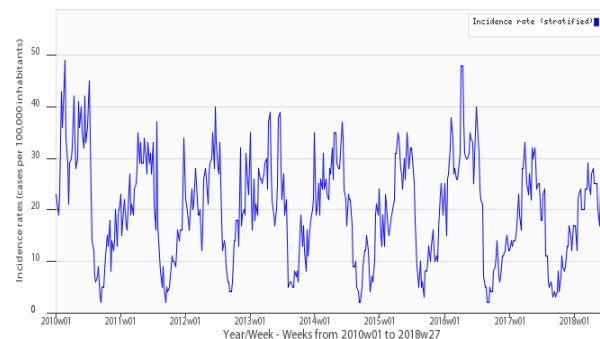
[1] Costagliola D, et al. A routine tool for detection and assessment of epidemics of influenza-like syndromes in France. *Am J Public Health.* 1991;81(1):97-9.

CHICKENPOX



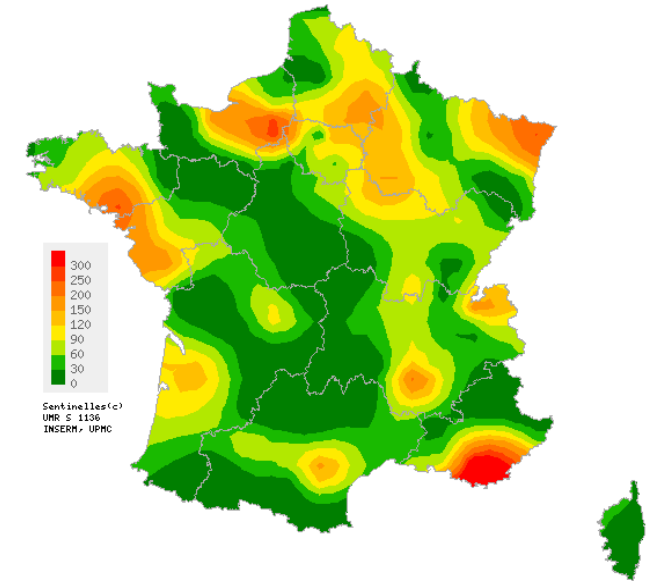
Map of spatial data interpolation based on incidence rates at the « département » (NUTS 3) level, (per 100,000 inhabitants), Chickenpox, Sentinelles general practitioners, 2018w27
[Maps available at http://www.sentiweb.fr](http://www.sentiweb.fr)

Sentinelles Network, Chickenpox, Metropolitan France



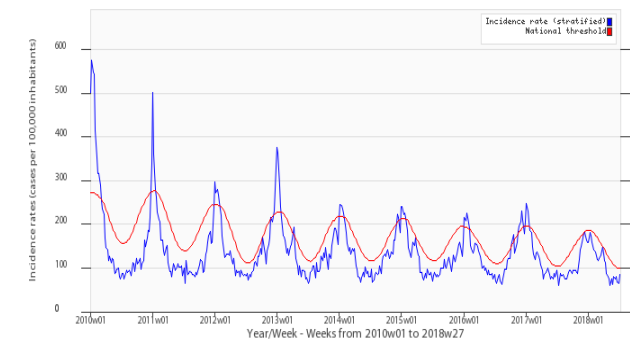
Incidence rate in blue, (per 100,000 inhabitants), Chickenpox, Sentinelles general practitioners

ACUTE DIARRHEA



Map of spatial data interpolation based on incidence rates at the « département » (NUTS 3) level, (per 100,000 inhabitants), Acute diarrhoea, Sentinelles general practitioners, 2018w27
[Maps available at http://www.sentiweb.fr](http://www.sentiweb.fr)

Sentinelles Network, Acute diarrhoea, Metropolitan France



Incidence rate in blue, epidemic threshold in red calculated by a periodic regression model [1] (per 100,000 inhabitants), Acute diarrhoea, Sentinelles general practitioners

National incidence rates (per 100,000 inhabitants) over the past 3 weeks	2018w27 (non consolidated)	2018w26	2018w25
	Incidence rate estimation [95% confidence interval]	Incidence rate estimation [95% confidence interval]	Incidence rate estimation [95% confidence interval]
INFLUENZA-LIKE ILLNESS	6 [2 ; 10]	6 [2 ; 10]	7 [3 ; 11]
ACUTE DIARRHEA	86 [70 ; 102]	65 [54 ; 76]	67 [56 ; 78]
CHICKENPOX	24 [16 ; 32]	23 [16 ; 30]	17 [12 ; 22]

Table 1 : Incidence rates* estimation with 95% confidence interval, for each indicator, in France, over the past 3 weeks .

Regional incidence rates for week 2018w27 (per 100,000 inhabitants)	INFLUENZA-LIKE ILLNESS	ACUTE DIARRHEA	CHICKENPOX
	Incidence rate estimation [95% confidence interval]	Incidence rate estimation [95% confidence interval]	Incidence rate estimation [95% confidence interval]
Auvergne-Rhône-Alpes	2 [0 ; 7]	71 [39 ; 103]	35 [10 ; 60]
Bourgogne-Franche-Comté	5 [0 ; 15]	82 [11 ; 153]	27 [1 ; 53]
Bretagne	34 [0 ; 85]	94 [16 ; 172]	112 [0 ; 309]
Centre-Val de Loire	7 [0 ; 21]	24 [0 ; 49]	18 [0 ; 39]
Corse	6 [0 ; 22]	29 [0 ; 67]	28 [0 ; 62]
Grand Est	25 [1 ; 49]	122 [57 ; 187]	55 [0 ; 111]
Hauts-de-France	0 [0 ; 0]	97 [27 ; 167]	41 [0 ; 98]
Ile-de-France	2 [0 ; 5]	79 [24 ; 134]	16 [0 ; 49]
Normandie	0 [0 ; 0]	122 [47 ; 197]	40 [0 ; 85]
Nouvelle-Aquitaine	0 [0 ; 0]	57 [16 ; 98]	0 [0 ; 0]
Occitanie	1 [0 ; 5]	49 [13 ; 85]	25 [0 ; 73]
Pays de la Loire	0 [0 ; 0]	74 [22 ; 126]	18 [0 ; 42]
Provence-Alpes-Côte d'Azur	0 [0 ; 0]	161 [12 ; 310]	70 [0 ; 164]

Table 2 : Incidence rates* estimation with 95% confidence interval, for each indicator, for each French region, for week 2018w27.

Réseau Sentinelles

Inserm - Sorbonne Université UMR-S 1136

Institut Pierre Louis d'Epidémiologie et de Santé Publique (IPLESP)
 Sorbonne-Université, site Saint-Antoine
 27, rue Chaligny / 75571 Paris cedex 12
 Phone : 01 44 73 84 35 / Fax : 01 44 73 84 54
 Email : sentinelles@upmc.fr

*The " Réseau Sentinelles" or Sentinelles Network
 (a.k.a. French Communicable Diseases Computer Network)
 is a network of 1,451 physicians working throughout the metropolitan regions of
 France including 585 involved in the clinical surveillance activity
 (466 general practitioners and 119 pediatricians)
 enabling the achievement of weekly newsletters.
 This network is developed within an agreement
 between Inserm, Sorbonne Université and Santé publique France.*

Head of RS: Thomas Hanslik
Deputy head of RS: Thierry Blanchon
Monitoring managers: Marion Debin, Caroline Guerrisi, Louise Rossignol,
 Laetitia Vaillant
Information systems, biostatistics: Corentin Hervé, Titouan Launay, Cécile
 Souty, Clément Turbelin, Ana Vileu
Publication: Yves Dorléans, Corentin Hervé

Regional branch	Head of network	Regional manager
Auvergne-Rhône-Alpes / Bourgogne-Franche-Comté	Marianne Sarazin	Caroline Liotard
Centre Val de Loire / Hauts-de-France	Thierry Prazuck	Mathieu Rivière
Ile-de-France	Mathilde François	Lucie Fournier
Méditerranée : Corse / Occitanie / Provence-Alpes-Côte d'Azur	Jean-Pierre Amoros Alessandra Falchi	Shirley Masse Natacha Villechenaud

Need information ?

You can visit our website :

<http://www.sentiweb.fr>

These information are also available by using our RSS feed :
<http://www.sentiweb.fr/rss/fr/en>

You can also contact us using the above contact information.

* Incidence rates estimate are calculated on the activity of general practitioners.