

## Acute Diarrhea

### ACUTE DIARRHEA

#### Moderate to high activity for the season

Sentinel physicians monitor the number of acute diarrhea seen in consultations (defined by recent acute diarrhea (at least 3 daily watery or nearly so stools, dating less than 14 days, motivating consultation).

**Clinical monitoring:** in metropolitan France, last week, the incidence rate of acute diarrhea seen in general practice was estimated at 161 cases per 100,000 inhabitants (95% CI [132 ; 190]), lower than the previous week and **just below** the epidemic threshold (166 cases per 100,000) [1].

The available data show a decrease in the activity of acute diarrhea last week, with an incidence rate below the epidemic threshold. The current activity remains slightly superior to the average activity observed in recent years in the same period. This higher activity seems to be a fall burst of activity rather than an early arrival of the seasonal epidemic of gastroenteritis.

**At the regional level,** the highest incidence rates were noted in: Grand Est (201 cases per 100,000 inhabitants, 95% CI [105 ; 297]), Pays de la Loire (177, 95% CI [26 ; 328]) and Nouvelle-Aquitaine (173, 95% CI [39 ; 307]) (the regional data are presented at the end of this newsletter).

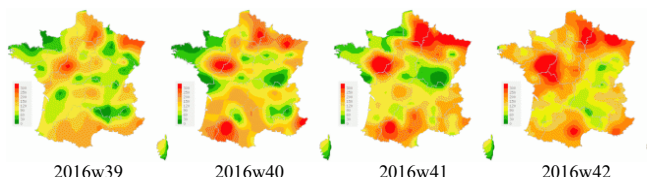
**Forecast:** according to the forecast model based on historical data [2], the level of activity of acute diarrhea should continue to decrease next week (see the graph hereafter).

[More information about this surveillance](#)

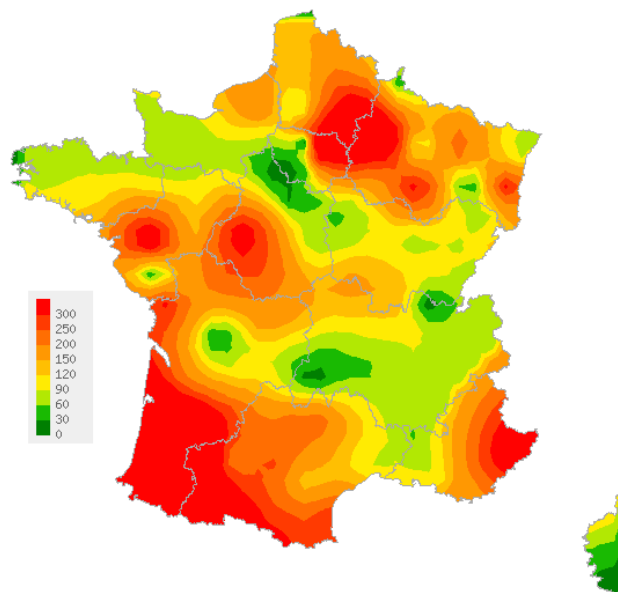
[Information about the statistical methods](#)

[1] Costagliola D, et al. A routine tool for detection and assessment of epidemics of influenza-like syndromes in France. *Am J Public Health.* 1991;81(1):97-9.

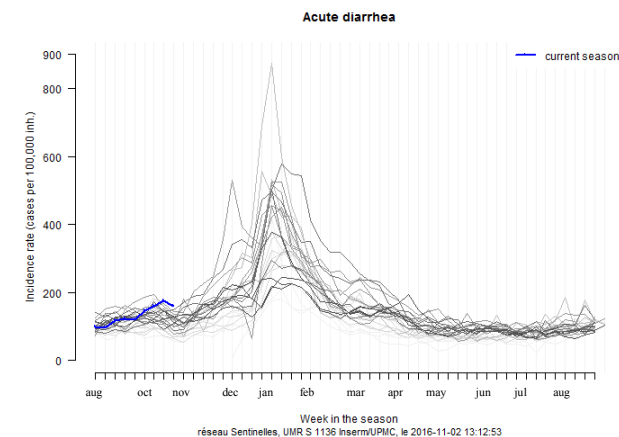
[2] Viboud C, et al. Prediction of the spread of influenza epidemics by the method of analogues. *Am J Epidemiol.* 2003 Nov 15;158(10):996-1006.



Consolidated data for the last 4 weeks

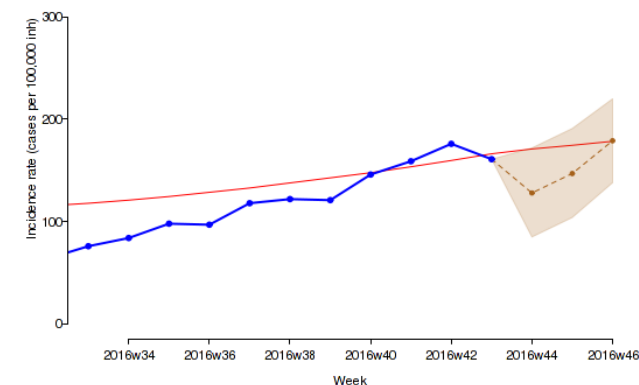


Map of spatial data interpolation based on acute diarrhea incidence rates at the « department » (NUTS 3) level (per 100 000 inhabitants), Sentinelles general practitioners, 2016w43  
Maps available at <http://www.sentiweb.fr>



Incidence rate of acute diarrhea since 1990 (per 100 000 inhabitants), Sentinelles general practitioners. In Blue : season 2016-17 ; in gray: seasons from 1990 to 2016 (clearer the curve older the data)

— Incidence rate  
— Epidemic threshold  
- - - Predictions and 95% CI (historical model)



Predicted acute diarrhea incidence rate for the next three weeks based on a forecast model on historical data [2]  
Sentinelles general practitioners

## CHICKENPOX

### Moderate activity

In metropolitan France, last week, the incidence rate of Chickenpox seen in general practice was estimated at 19 cases per 100,000 inhabitants (95% CI [9 ; 29]).

Two moderate regional clusters were reported in Nouvelle-Aquitaine (38, 95% CI [10 ; 66]) and Pays de la Loire (20, 95% CI [0 ; 71]). \*

[More information about this surveillance](#)

## INFLUENZA-LIKE ILLNESS

### Low activity

In metropolitan France, last week, the incidence rate of Influenza-like illness seen in general practice was estimated at 13 cases per 100,000 inhabitants (95% CI [7 ; 19]), below the epidemic threshold (127 cases per 100,000 inhabitants) [1].

At the regional level, the highest incidence rates were noted in: Bourgogne-Franche-Comté (73 cases per 100,000 inhabitants, 95% CI [0 ; 146]), Ile-de-France (31, 95% CI [0 ; 62]) and Auvergne-Rhône-Alpes (27, 95% CI [8 ; 46]). \*

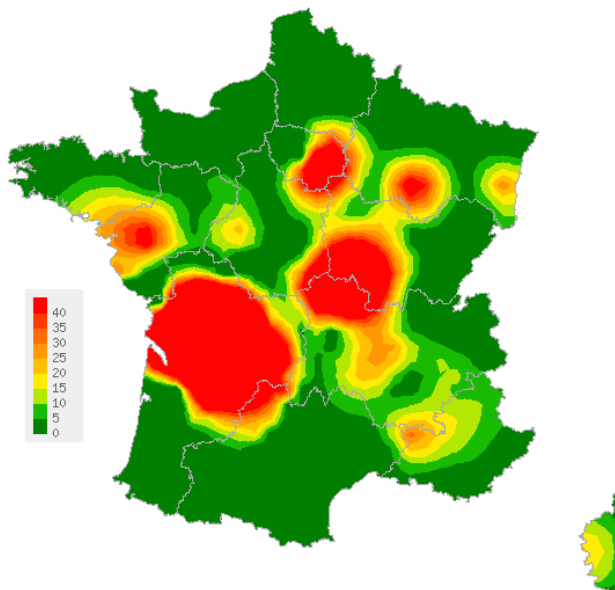
[More information about this surveillance](#)

[Information about the statistical methods](#)

\* The regional data are presented at the end of this report.

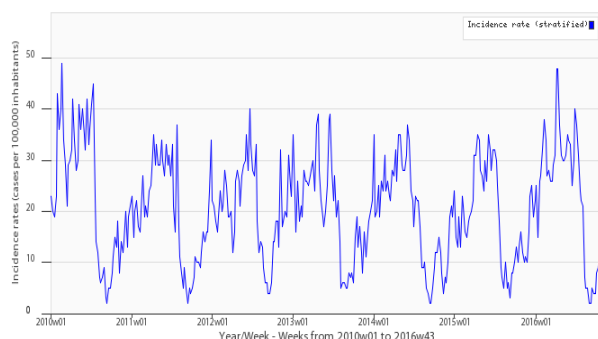
[1] Costagliola D, et al. A routine tool for detection and assessment of epidemics of influenza-like syndromes in France. *Am J Public Health*. 1991;81(1):97-9.

## CHICKENPOX



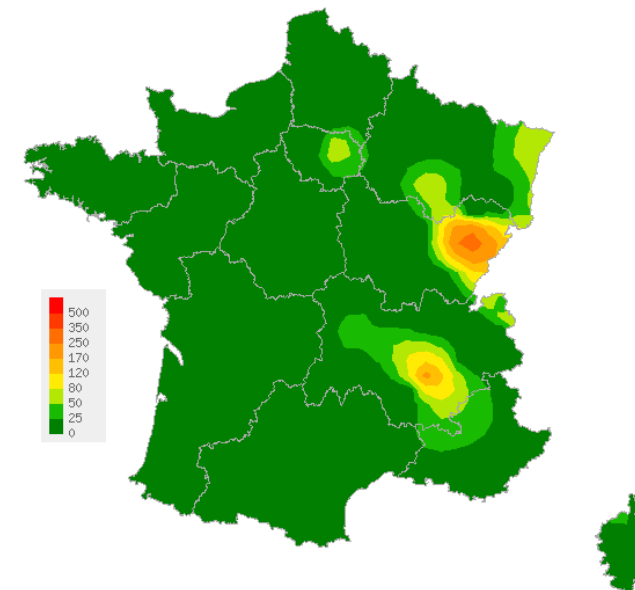
Map of spatial data interpolation based on incidence rates at the « département » (NUTS 3) level, (per 100 000 inhabitants), Chickenpox, Sentinelles general practitioners, 2016w43  
[Maps available at http://www.sentiweb.fr](http://www.sentiweb.fr)

Sentinelles Network, Chickenpox, Metropolitan France



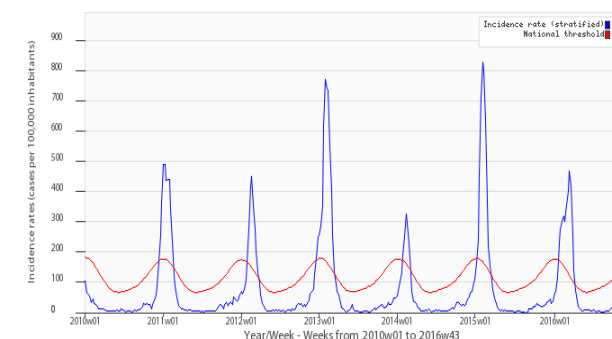
Incidence rate in blue, (per 100 000 inhabitants), Chickenpox, Sentinelles general practitioners

## INFLUENZA-LIKE ILLNESS



Map of spatial data interpolation based on incidence rates at the « département » (NUTS 3) level, (per 100 000 inhabitants), Influenza-like illness, Sentinelles general practitioners, 2016w43  
[Maps available at http://www.sentiweb.fr](http://www.sentiweb.fr)

Sentinelles Network, Influenza-like illness, Metropolitan France



Incidence rate in blue, epidemic threshold in red calculated by a periodic regression model [1] (per 100 000 inhabitants), Influenza-like illness, Sentinelles general practitioners

National incidence rates (per 100 000 inhabitants) over the past 3 weeks	2016w43 (non consolidated)	2016w42	2016w41
	Incidence rate estimation [95% confidence interval]	Incidence rate estimation [95% confidence interval]	Incidence rate estimation [95% confidence interval]
INFLUENZA-LIKE ILLNESS	13 [7 ; 19]	20 [14 ; 26]	21 [15 ; 27]
ACUTE DIARRHEA	161 [132 ; 190]	176 [156 ; 196]	159 [141 ; 177]
CHICKENPOX	19 [9 ; 29]	10 [5 ; 15]	9 [5 ; 13]

Table 1 : Incidence rates\* estimation with 95% confidence interval, for each indicator, in France, over the past 3 weeks .

Regional incidence rates for week 2016w43 (per 100 000 inhabitants)	INFLUENZA-LIKE ILLNESS	ACUTE DIARRHEA	CHICKENPOX
	Incidence rate estimation [95% confidence interval]	Incidence rate estimation [95% confidence interval]	Incidence rate estimation [95% confidence interval]
Auvergne-Rhône-Alpes	27 [8 ; 46]	81 [45 ; 117]	14 [1 ; 27]
Bourgogne-Franche-Comté	73 [0 ; 146]	87 [18 ; 156]	0 [0 ; 0]
Bretagne	2 [0 ; 11]	100 [26 ; 174]	5 [0 ; 21]
Centre-Val de Loire	2 [0 ; 7]	152 [53 ; 251]	8 [0 ; 32]
Corse	26 [0 ; 63]	87 [15 ; 159]	10 [0 ; 27]
Grand Est	23 [0 ; 54]	201 [105 ; 297]	6 [0 ; 15]
Hauts-de-France	0 [0 ; 0]	161 [76 ; 246]	0 [0 ; 0]
Ile-de-France	31 [0 ; 62]	170 [98 ; 242]	12 [0 ; 24]
Normandie	0 [0 ; 0]	129 [34 ; 224]	0 [0 ; 2]
Nouvelle-Aquitaine	0 [0 ; 0]	173 [39 ; 307]	38 [10 ; 66]
Occitanie	5 [0 ; 14]	139 [62 ; 216]	0 [0 ; 0]
Pays de la Loire	0 [0 ; 0]	177 [26 ; 328]	20 [0 ; 71]
Provence-Alpes-Côte d'Azur	7 [0 ; 21]	133 [51 ; 215]	4 [0 ; 13]

Table 2 : Incidence rates\* estimation with 95% confidence interval, for each indicator, for each French region, for week 2016w43.

**Réseau Sentinelles**  
**Inserm-UPMC UMR-S 1136**  
**Institut Pierre Louis d'Epidémiologie et de Santé Publique (IPLESP)**  
**Faculté de Médecine Pierre et Marie Curie, site Saint-Antoine**  
**27, rue Chaligny / 75571 Paris cedex 12**  
Phone. : 01 44 73 84 35 / Fax : 01 44 73 84 54  
Email : [sentinelles@upmc.fr](mailto:sentinelles@upmc.fr)

*The "Réseau Sentinelles" or Sentinelles Network  
(a.k.a. French Communicable Diseases Computer Network)  
is a network of 1392 physicians working throughout the metropolitan regions  
of France including 549 involved in the clinical surveillance activity  
(436 general practitioners and 113 pediatricians)  
enabling the achievement of weekly newsletters.  
This network is developed in cooperation between Inserm, Université Pierre  
et Marie Curie (UPMC) and the Agence Santé publique France.*

**Head of RS :** Thomas Hanslik  
**Deputy head of RS :** Thierry Blanchon  
**Monitoring managers:** Louise Rossignol, Caroline Guerrisi, Victoire Roussel  
**Information systems, biostatistics :** Clément Turbelin, Cécile Souty  
**Editor :** Yves Dorléans

Regional branch	Head of network	Regional manager
<b>Auvergne-Rhône-Alpes / Bourgogne-Franche-Comté</b>	Marianne Sarazin	Caroline Liotard
<b>Centre-Val de Loire / Hauts-de-France</b>	Thierry Prazuck	Mathieu Rivière
<b>Ile-de-France</b>	Mathilde François	Cécile Pino
<b>Méditerranée : Corse, Occitanie, Provence- Alpes-Côte-d'Azur</b>	Jean-Pierre Amoros Alessandra Falchi	Lisandru Capai Shirley Masse

**Need information ?**

You can visit our website :

<http://www.sentiweb.fr>

These information are also available by using our RSS feed :

<http://www.sentiweb.fr/rss/fr/en>

You can also contact us using the above contact information.

\* Incidence rates estimate are calculated on the activity of general practitioners.