

Sentinelles network report from 05/15/2019, n° 2019w19 (data from 05/06/2019 to 05/12/2019)

CHICKENPOX

Moderate activity in general practice

In metropolitan France, last week (2019w19), the incidence rate of Chickenpox seen in general practice was estimated at 27 cases per 100,000 inhabitants (95% CI [20 ; 34]).

Nine regional clusters were noted, moderate in Hauts-de-France (34, 95% CI [7 ; 61]), Normandie (33, 95% CI [3 ; 63]), Bretagne (33, 95% CI [5 ; 61]), Provence-Alpes-Côte d'Azur (31, 95% CI [3 ; 59]), Auvergne-Rhône-Alpes (28, 95% CI [9 ; 47]), Ile-de-France (28, 95% CI [4 ; 52]), Centre-Val de Loire (25, 95% CI [0 ; 50]), Corse (24, 95% CI [0 ; 54]) and Nouvelle-Aquitaine (21, 95% CI [0 ; 45]). *

[More information about chickenpox Sentinelles surveillance](#)

ACUTE DIARRHEA

Moderate activity in general practice

In metropolitan France, last week (2019w19), the incidence rate of acute diarrhoea seen in general practice was estimated at 108 cases per 100,000 inhabitants (95% CI [93 ; 123]), below the epidemic threshold (111 cases per 100,000).

At the regional level, the highest incidence rates were noted in: Pays de la Loire (226 cases per 100,000 inhabitants, 95% CI [0 ; 505]), Hauts-de-France (148, 95% CI [90 ; 206]) and Grand Est (125, 95% CI [71 ; 179]). *

[More information about acute diarrhoea Sentinelles surveillance](#)

INFLUENZA-LIKE ILLNESS

Low activity in general practice

In metropolitan France, last week (2019w19), the incidence rate of influenza-like illness seen in general practice was estimated at 5 cases per 100,000 inhabitants (95% CI [2 ; 8]).

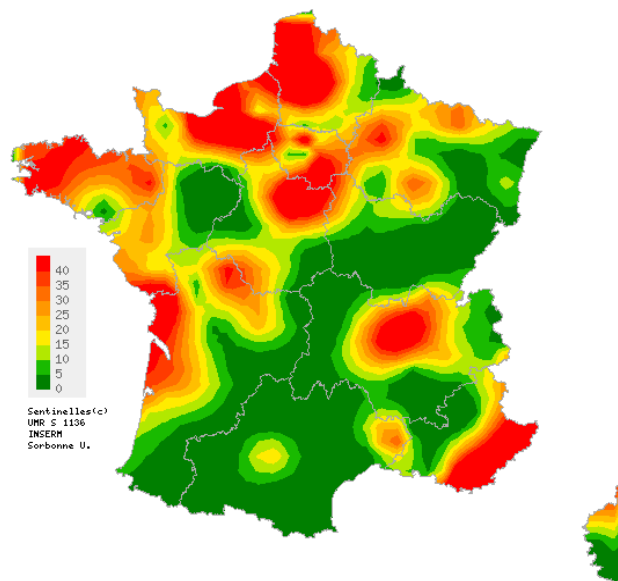
At the regional level, the highest incidence rates were noted in: Bretagne (28 cases per 100,000 inhabitants, 95% CI [0 ; 71]), Normandie (16, 95% CI [0 ; 38]) and Hauts-de-France (8, 95% CI [0 ; 21]). *

[More information about influenza-like illness Sentinelles surveillance](#)

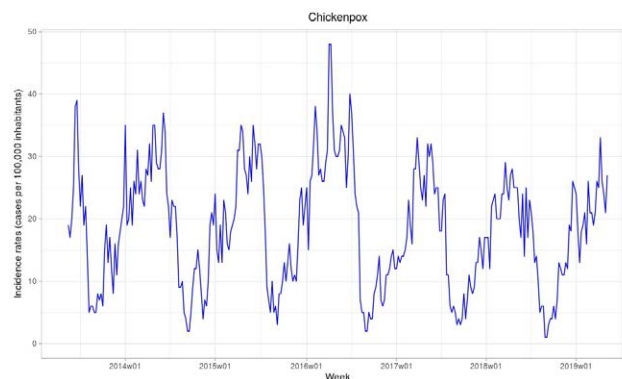
[Information about Sentinelles network statistical methods \(in french\)](#)

* The regional data are presented at the end of this report.

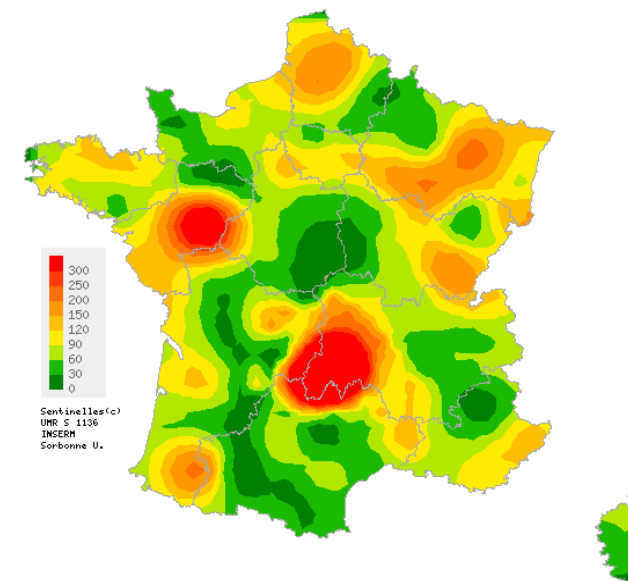
CHICKENPOX



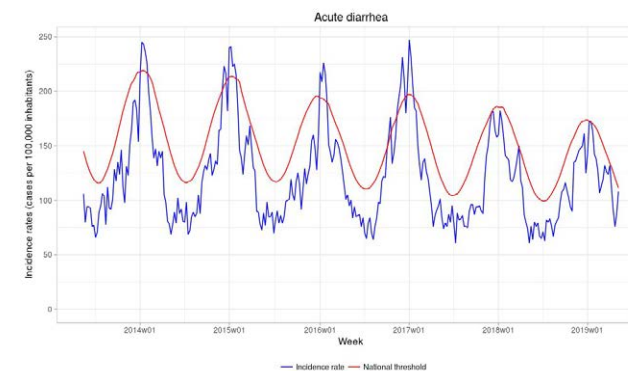
Map of spatial data interpolation based on incidence rates at the « département » (NUTS 3) level, (per 100,000 inhabitants), Chickenpox, Sentinelles general practitioners, 2019w19
[Maps available at http://www.sentiweb.fr](http://www.sentiweb.fr)



ACUTE DIARRHEA



Map of spatial data interpolation based on incidence rates at the « département » (NUTS 3) level, (per 100,000 inhabitants), Acute diarrhoea, Sentinelles general practitioners, 2019w19
[Maps available at http://www.sentiweb.fr](http://www.sentiweb.fr)



National incidence rates (per 100,000 inhabitants) over the past 3 weeks	2019w19 (non consolidated)	2019w18	2019w17
	Incidence rate estimation [95% confidence interval]	Incidence rate estimation [95% confidence interval]	Incidence rate estimation [95% confidence interval]
INFLUENZA-LIKE ILLNESS	5 [2 ; 8]	2 [0 ; 4]	5 [2 ; 8]
ACUTE DIARRHEA	108 [93 ; 123]	88 [76 ; 100]	76 [65 ; 87]
CHICKENPOX	27 [20 ; 34]	21 [15 ; 27]	24 [18 ; 30]

Table 1 : Incidence rates* estimation with 95% confidence interval, for each indicator, in France, over the past 3 weeks.

Regional incidence rates for week 2019w19 (per 100,000 inhabitants)	INFLUENZA-LIKE ILLNESS	ACUTE DIARRHEA	CHICKENPOX
	Incidence rate estimation [95% confidence interval]	Incidence rate estimation [95% confidence interval]	Incidence rate estimation [95% confidence interval]
Auvergne-Rhône-Alpes	6 [0 ; 15]	122 [69 ; 175]	28 [9 ; 47]
Bourgogne-Franche-Comté	0 [0 ; 0]	66 [14 ; 118]	2 [0 ; 6]
Bretagne	28 [0 ; 71]	68 [29 ; 107]	33 [5 ; 61]
Centre-Val de Loire	0 [0 ; 0]	65 [32 ; 98]	25 [0 ; 50]
Corse	0 [0 ; 0]	73 [17 ; 129]	24 [0 ; 54]
Grand Est	3 [0 ; 9]	125 [71 ; 179]	16 [0 ; 33]
Hauts-de-France	8 [0 ; 21]	148 [90 ; 206]	34 [7 ; 61]
Ile-de-France	2 [0 ; 6]	76 [45 ; 107]	28 [4 ; 52]
Normandie	16 [0 ; 38]	72 [21 ; 123]	33 [3 ; 63]
Nouvelle-Aquitaine	3 [0 ; 7]	113 [47 ; 179]	21 [0 ; 45]
Occitanie	0 [0 ; 0]	72 [36 ; 108]	12 [0 ; 26]
Pays de la Loire	3 [0 ; 10]	226 [0 ; 505]	14 [0 ; 31]
Provence-Alpes-Côte d'Azur	5 [0 ; 15]	100 [33 ; 167]	31 [3 ; 59]

Table 2 : Incidence rates* estimation with 95% confidence interval, for each indicator, for each French region, for week 2019w19.

Regional branch	Head of network	Regional manager
Auvergne-Rhône-Alpes / Bourgogne-Franche-Comté	Marianne Sarazin	Caroline Liotard
Centre Val de Loire / Pays de la Loire / Hauts-de-France	Thierry Prazuck	Charly Kengne-Kuetche Mathieu Rivière
Ile-de-France	Mathilde François	Lucie Fournier
Méditerranée : Corse / Provence-Alpes-Côte d'Azur	Jean-Pierre Amoros Alessandra Falchi	Shirley Masse Natacha Villechenaud
Sud-Ouest : Nouvelle-Aquitaine / Occitanie	Louise Rossignol Thierry Blanchon (no regional branch)	Marion Debin
Normandie		Laetitia Vaillant
Bretagne		Jennifer Morice
Grand Est		Caroline Guerrisi

Need information ?

You can visit our website :

<http://www.sentiweb.fr>

These information are also available by using our RSS feed :

<http://www.sentiweb.fr/rss/fr/en>

You can also contact us using the above contact information.

* Incidence rates estimate are calculated on the activity of general practitioners.