

Sentinelles network report from 05/22/2013, n° 2013w20 (data from 05/13/2013 to 05/19/2013)

Chickenpox, Acute diarrheal and Influenza-like illness

Results from the electronic surveillance of communicable diseases from 05/13/2013 to 05/19/2013.

CHICKENPOX Moderate activity

In metropolitan France, last week, the incidence of chickenpox seen in general practice was estimated at 27 cases per 100,000 inhabitants.

Seven regional activity clusters were reported, **high** in Centre (78 cases per 100,000 inhabitants), Franche-Comté (75), Midi-Pyrénées (51) and Ile-de-France (46), and **moderate** in Alsace (38), Languedoc-Roussillon (38) and Nord-Pas-de-Calais (24). *The regional data are presented at the end of this newsletter.*

[More information about this surveillance](#)

ACUTE DIARRHEA Low activity

In metropolitan France, last week, the incidence of acute diarrheal seen in general practice was estimated at 149 cases per 100,000 inhabitants, **below** the epidemic threshold (163 cases per 100,000). *The regional data are presented at the end of this newsletter.*

[More information about this surveillance](#)

INFLUENZA-LIKE ILLNESS Low activity

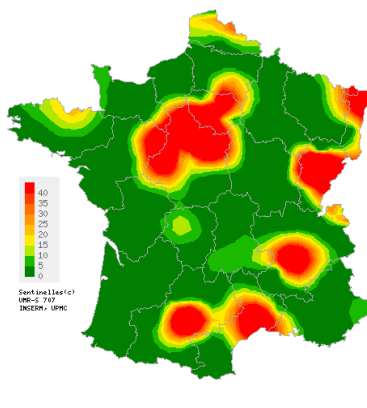
In metropolitan France, last week, the incidence of influenza-like illness seen in general practice was estimated at 6 cases per 100,000 inhabitants, **below** the epidemic threshold (72 cases per 100,000). *The regional data are presented at the end of this newsletter.*

[More information about this surveillance](#)

The Sentinelles network team

CHICKENPOX

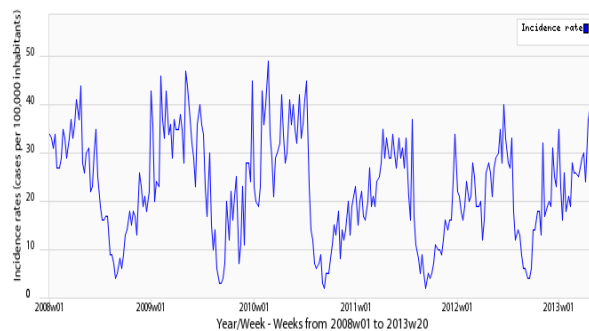
Observations for Chickenpox
 Week 2013w20 (in cases per 100,000 inhabitants)



Map of spatial data interpolation based on incidence rates at the « département » (NUTS 3) level.

Maps available at <http://www.sentiweb.fr>

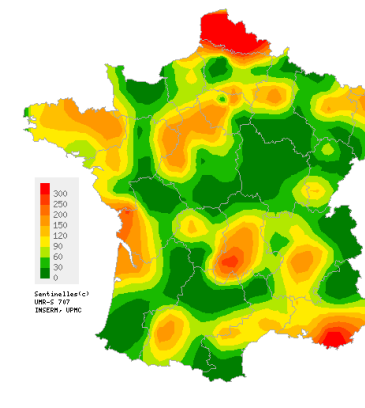
Sentinelles Network, Chickenpox, France (mainland)



Incidence rate (cases per 100,000 inhabitants).

ACUTE DIARRHEA

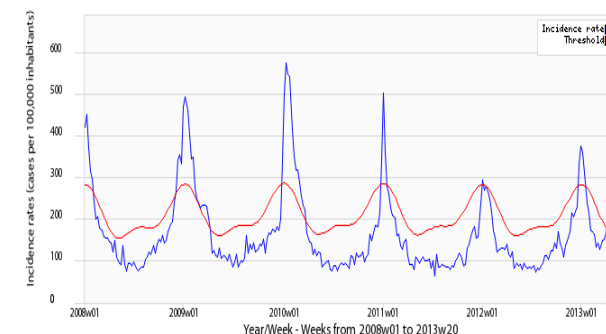
Observations for Acute diarrheal
 Week 2013w20 (in cases per 100,000 inhabitants)



Map of spatial data interpolation based on incidence rates at the « département » (NUTS 3) level.

Maps available at <http://www.sentiweb.fr>

Sentinelles Network, Acute diarrheal, France (mainland)



Incidence rate (cases per 100,000 inhabitants) in blue.
 In red, the epidemic threshold calculated using a periodic regression model applied to the former observed data.

National incidence rates (per 100 000 inhabitants) over the past 3 weeks	2013w20 (non consolidated)	2013w19	2013w18
	Incidence rate estimation [Reliance interval of 95%]	Incidence rate estimation [Reliance interval of 95%]	Incidence rate estimation [Reliance interval of 95%]
INFLUENZA-LIKE ILLNESS	6 [1 ; 12]	2 [0 ; 4]	5 [1 ; 10]
ACUTE DIARRHEA	149 [113 ; 185]	85 [67 ; 103]	105 [84 ; 127]
CHICKENPOX	27 [15 ; 40]	23 [14 ; 32]	28 [19 ; 37]

Table 1 : Incidence rates estimation with reliance intervals of 95%, for each indicator, in France, over the past 3 weeks .

Regional incidence rates for week 2013w20 (per 100 000 inhabitants)	INFLUENZA-LIKE ILLNESS	ACUTE DIARRHEA	CHICKENPOX
	Incidence rate estimation [Reliance interval of 95%]	Incidence rate estimation [Reliance interval of 95%]	Incidence rate estimation [Reliance interval of 95%]
Alsace	0 [0 ; 0]	125 [0 ; 259]	38 [0 ; 110]
Aquitaine	0 [0 ; 0]	75 [0 ; 223]	0 [0 ; 0]
Auvergne	0 [0 ; 0]	132 [21 ; 244]	3 [0 ; 17]
Basse-Normandie	0 [0 ; 0]	20 [0 ; 66]	0 [0 ; 0]
Bourgogne	0 [0 ; 0]	16 [0 ; 64]	0 [0 ; 0]
Bretagne	15 [0 ; 44]	141 [33 ; 248]	5 [0 ; 15]
Centre	0 [0 ; 0]	124 [51 ; 197]	78 [18 ; 137]
Champagne-Ardenne	0 [0 ; 0]	90 [0 ; 245]	0 [0 ; 0]
Corse	0 [0 ; 0]	27 [0 ; 85]	0 [0 ; 0]
Franche-Comté	0 [0 ; 0]	54 [0 ; 124]	75 [0 ; 198]
Haute-Normandie	0 [0 ; 0]	98 [0 ; 258]	0 [0 ; 0]
Ile-de-France	10 [0 ; 29]	98 [45 ; 151]	46 [10 ; 81]
Languedoc-Roussillon	31 [0 ; 75]	97 [20 ; 173]	38 [0 ; 88]
Limousin	0 [0 ; 0]	87 [0 ; 256]	9 [0 ; 62]
Lorraine	0 [0 ; 0]	71 [5 ; 137]	0 [0 ; 0]
Midi-Pyrénées	0 [0 ; 0]	52 [0 ; 136]	51 [0 ; 157]
Nord-Pas-de-Calais	0 [0 ; 0]	600 [58 ; 1141]	24 [0 ; 97]
Pays-de-la-Loire	11 [0 ; 34]	87 [20 ; 153]	11 [0 ; 36]
Picardie	0 [0 ; 0]	0 [0 ; 0]	0 [0 ; 0]
Poitou-Charentes	0 [0 ; 0]	104 [0 ; 218]	0 [0 ; 0]
Provence-Alpes-Côte-d'Azur	0 [0 ; 0]	167 [5 ; 328]	2 [0 ; 11]
Rhône-Alpes	11 [0 ; 28]	90 [42 ; 138]	16 [0 ; 33]

Table 2 : Incidence rates estimation with reliance intervals of 95%, for each indicator, for each French regions, for week 2013w20 .

**Réseau Sentinelles - Unité Mixte de Recherche en Santé 707
(UMR S 707) Inserm-UPMC**
Faculté de Médecine Pierre et Marie Curie, site Saint-Antoine
27, rue Chaligny / 75571 Paris cedex 12
 Phone. : 01 44 73 84 35 / Fax : 01 44 73 84 54
 Email : sentinelles@u707.jussieu.fr

*The " Réseau Sentinelles" or Sentinelles Network
(a.k.a. French Communicable Diseases Computer Network)
is a network of general practitioners, working throughout the metropolitan
regions of France. This group includes 1284 physicians, including 354
involved in the clinical surveillance activity, enabling the achievement of
weekly newsletters.*

*This network is developed in cooperation between Inserm, Université Pierre
et Marie Curie (UPMC) and the Institut de Veille Sanitaire (InVS).*

Head of UMR S 707 Inserm-UPMC : Guy Thomas
Head of RS : Thomas Hanslik
Deputy head of RS : Thierry Blanchon
Electronic surveillance system manager : Christophe Arena
Information systems, biostatistics : Clément Turbelin
Editor : Yves Dorléans

Regional branch	Head of network	Regional manager
Méditerranée	Jean-Pierre Amoros	Christophe Arena Alessandra Falchi
Auvergne Rhône-Alpes	Marianne Sarazin	Solange Gonzalez-Chiappe
Franche-Comté	Jean-Pierre Ferry	Jean-Pierre Ferry
Centre	Thierry Prazuck	Mathieu Rivière

<p>Need information ?</p> <p>You can visit our website :</p> <p>www.sentiweb.fr/?lang=en</p> <p>You can also contact us using the above contact information.</p>	<p>Are you a GP practicing in France ?</p> <p>You are willing to take part in the Sentinelles' Network?</p> <p>www.sentiweb.fr/?lang=en Physicians' zone</p> <p>You can also contact us using the above contact information.</p>
---	--