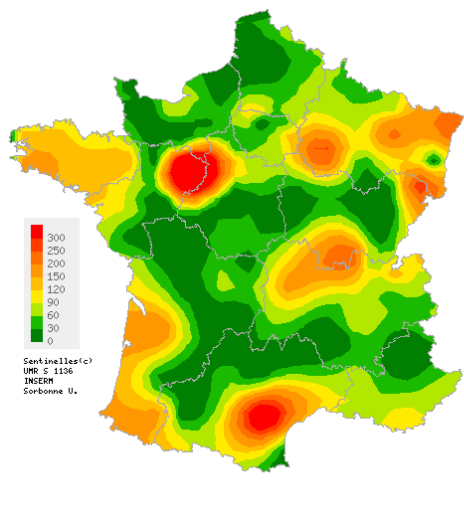


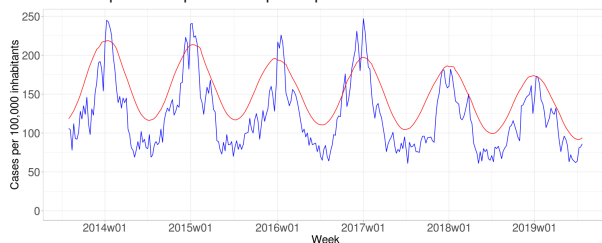
Weekly report on 07/31/2019, 2019w30 (from 07/22/2019 to 07/28/2019)

## Acute diarrhea

Moderate activity in general practice



Spatial interpolation map of departmental incidence rates



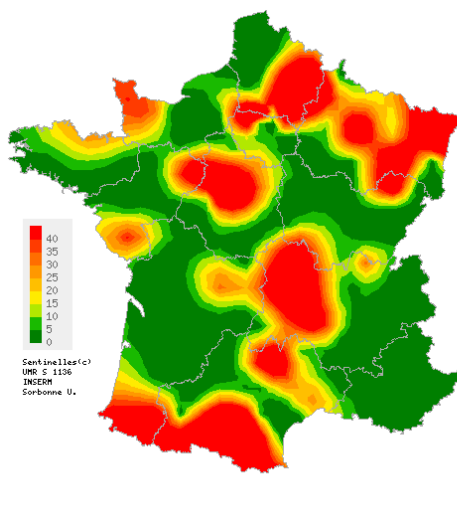
Incidence rates by week (blue curve) and epidemic threshold (red curve)

**In metropolitan France**, last week (2019w30), the incidence rate of acute diarrhea seen in general practice was estimated at 86 cases per 100,000 inhabitants (95% CI [70 ; 102], **below** the epidemic threshold (94 cases per 100,000).

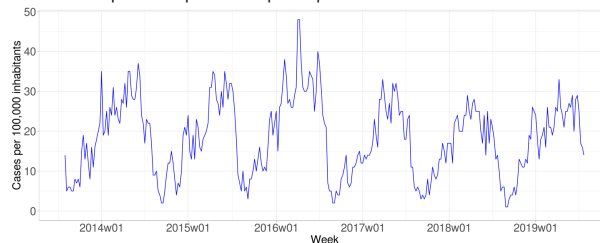
**At the regional level**, the highest incidence rates were noted in : Pays de la Loire (178, [57 ; 299]), Bretagne (142, [44 ; 240]) and Grand Est (131, [68 ; 194]).

## Chickenpox

Low to moderate activity in general practice



Spatial interpolation map of departmental incidence rates



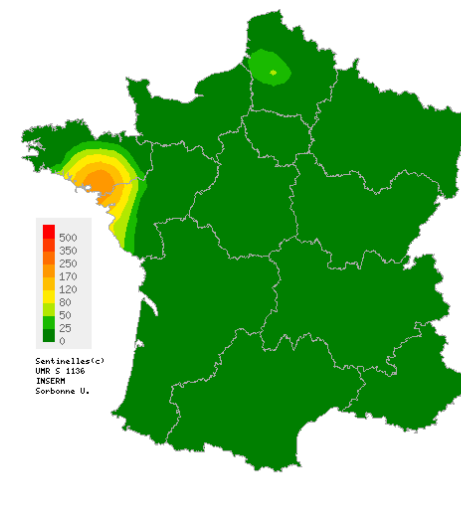
Incidence rates by week (blue curve)

**In metropolitan France**, last week (2019w30), the incidence rate of Chickenpox seen in general practice was estimated at 14 cases per 100,000 inhabitants (95% CI [8 ; 20]).

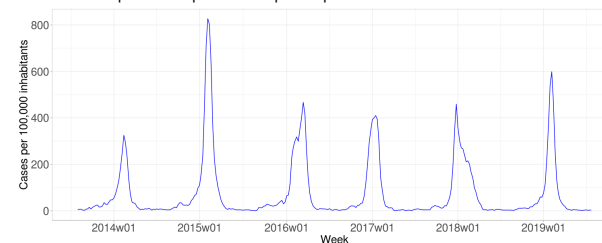
**Three moderate regional clusters** were noted in Grand Est (33, [0 ; 66]), Centre-Val de Loire (27, [0 ; 68]) and Occitanie (20, [2 ; 38]).

## Influenza-like illness

Low activity in general practice



Spatial interpolation map of departmental incidence rates



Incidence rates by week (blue curve)

**In metropolitan France**, last week (2019w30), the incidence rate of influenza-like illness seen in general practice was estimated at 3 cases per 100,000 inhabitants (95% CI [0 ; 6]).

**At the regional level**, the highest incidence rates were noted in : Bretagne (62, [0 ; 132]), Corse (14, [0 ; 41]) and Hauts-de-France (6, [0 ; 17]).

Weekly report on 07/31/2019, 2019w30 (from 07/22/2019 to 07/28/2019)

National incidence rates over 3 last weeks (per 100,000 inhabitants)	2019w30 (unconsolidated) Incidence rate estimations [95% confidence interval]	2019w29 Incidence rate estimations [95% confidence interval]	2019w28 Incidence rate estimations [95% confidence interval]
Influenza-like Illness	3 [0 ; 6]	3 [0 ; 6]	2 [0 ; 4]
Acute diarrhea	86 [70 ; 102]	82 [69 ; 95]	81 [69 ; 93]
Chickenpox	14 [8 ; 20]	16 [10 ; 22]	17 [11 ; 23]

Regional incidence rates for the week 2019w30 (per 100,000 inhabitants)	Influenza-like Illness Incidence rate estimations [95% confidence interval]	Acute diarrhea Incidence rate estimations [95% confidence interval]	Chickenpox Incidence rate estimations [95% confidence interval]
Auvergne-Rhône-Alpes	0 [0 ; 0]	94 [47 ; 141]	17 [0 ; 37]
Bourgogne-Franche-Comté	0 [0 ; 0]	84 [0 ; 188]	6 [0 ; 16]
Bretagne	62 [0 ; 132]	142 [44 ; 240]	5 [0 ; 15]
Centre-Val de Loire	0 [0 ; 0]	54 [11 ; 97]	27 [0 ; 68]
Corse	14 [0 ; 41]	74 [10 ; 138]	0 [0 ; 0]
Grand Est	0 [0 ; 0]	131 [68 ; 194]	33 [0 ; 66]
Hauts-de-France	6 [0 ; 17]	49 [9 ; 89]	15 [0 ; 43]
Ile-de-France	2 [0 ; 5]	42 [16 ; 68]	16 [0 ; 35]
Normandie	0 [0 ; 0]	36 [4 ; 68]	11 [0 ; 32]
Nouvelle-Aquitaine	0 [0 ; 0]	92 [35 ; 149]	9 [0 ; 26]
Occitanie	0 [0 ; 2]	90 [45 ; 135]	20 [2 ; 38]
Pays de la Loire	0 [0 ; 0]	178 [57 ; 299]	18 [0 ; 55]
Provence-Alpes-Côte d'Azur	0 [0 ; 0]	77 [0 ; 164]	0 [0 ; 0]

## French Sentinel network

### Pierre Louis Institute of Epidemiology and Public Health

UMR-S 1136 (Inserm - Sorbonne Université)

Phone : +33 144 738 435 | E-mail : [sentinelles@upmc.fr](mailto:sentinelles@upmc.fr)

The "réseau Sentinelles" or Sentinelles Network (a.k.a. French Communicable Diseases Computer Network) is a network of primary care physicians working throughout the metropolitan regions of France including 558 involved in the clinical surveillance activity (495 general practitioners and 63 pediatricians), enabling the achievement of weekly newsletters.

**Heads of Sentinel Network** : Thomas Hanslik, Thierry Blanchon

**Publication** : Yves Dorléans

**Information systems & biostatistics** : Corentin Hervé, Titouan Launay, Cécile Souty, Clément Turbelin, Ana Vilcu

**Monitoring manager** : Louise Rossignol

Regional branch	Head & Epidemiologists/Animators
Auvergne-Rhône-Alpes, Bourgogne-Franche-Comté	<b>Marianne Sarazin</b> Caroline Liotard
Centre-Val de Loire, Pays de la Loire, Hauts-de-France	<b>Thierry Prazuck</b> Charly Kengne-Kuetché, Mathieu Rivière
Ile-de-France	<b>Mathilde François</b>
Corse, PACA	<b>Alessandra Falchi</b> Shirley Masse, Natacha Villechenaud
Nouvelle-Aquitaine, Occitanie	Marion Debin
Normandie	Laetitia Vaillant
Bretagne	Jennifer Morice
Grand Est	Caroline Guerrisi

## Need more information

Visit our website :

<https://www.sentiweb.fr/>

## You are a french GP ?

Contact us

<https://www.sentiweb.fr/france/fr/inscrire>

## Envie de participer à la veille sanitaire ?

 **grippenet.fr**

Devenez Grippenaute !

<https://www.grippenet.fr/>