

Sentinelles network report from 01/23/2019, n° 2019w03 (data from 01/14/2019 to 01/20/2019)

## Influenza-like illness

### High Activity in general practice

Sentinel physicians monitor the number of ILI seen in consultations (defined by sudden fever > 39°C (>102°F) with myalgia and respiratory signs).

**Clinical monitoring:** in metropolitan France, last week (2019w03), the incidence rate of influenza-like illness seen in general practice was estimated at 214 cases per 100,000 inhabitants (95% CI [195 ; 233]), in sharp increase from the previous week (data for the last 3 weeks are presented at the end of this newsletter).

**At the regional level,** the highest incidence rates were noted in: Occitanie (297 cases per 100,000 inhabitants, 95% CI [228 ; 366]), Corse (273, 95% CI [163 ; 383]), Ile-de-France (269, 95% CI [206 ; 332]) and Provence-Alpes-Côte d'Azur (269, 95% CI [175 ; 363]) (the regional data are presented at the end of this newsletter).

**Regarding the cases reported** last week, the median age was 24 years (4 months to 96 years). Males accounted for 49% of the cases. These cases showed no particular sign of severity: the percentage of hospitalization was estimated at 0.7% (95% CI [0 ; 1.5]).

In order to have a global vision of the situation in metropolitan France, all available data on winter respiratory infections are analysed jointly by Santé publique France, the National Respiratory Viruses Reference Center and the Sentinelles network.

**In view of all this information, the conclusions for the last week (2019w03) are:**

- marked increase in influenza activity
- All metropolitan regions in epidemic except Normandie
- Majority circulation of type A viruses
- Slight increase in vaccination coverage for people at risk in all regions in Metropolitan France in comparison with last year

**Virological monitoring:** since week 2018w40, date of start of monitoring, 874 samples were swabbed by the Sentinelles network practitioners (602 by general practitioners and 272 by pediatricians). Among all the samples tested (n=867), 252 (29.1%) were positive for an influenza virus.

Last week, 119 samples were tested. Among them, 79 (66.4%) were positive for an influenza virus. The positivity rate has strongly increased this week.

The viruses of type A(H3N2) et A(H1N1)pdm09 was circulating. The influenza viruses detected since the beginning of their monitoring were distributed as follows:

- 99 (11.4%) A(H1N1)pdm09 virus,
- 128 (14.8%) A(H3N2) virus,
- 25 (2.9%) A untyped virus,
- 0 (0.0%) B/Victoria lineage virus,
- 0 (0.0%) B/Yamagata lineage virus,
- 0 (0.0%) B unknown lineage virus.

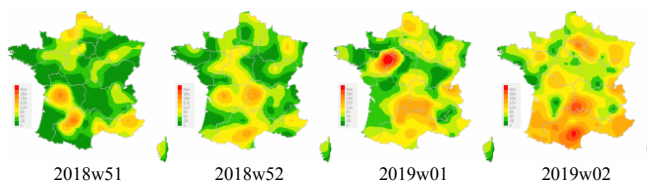
No influenza A and B viruses co-infections has been observed over the entire virological surveillance period.

Regarding the other respiratory viruses, since the beginning of their monitoring, 133 swabs (15.8%) were positive for the rhinovirus (hRV), 124 (14.2%) for the respiratory syncytial virus (RSV), and 27 (3.1%) for the metapneumovirus (hMPV).

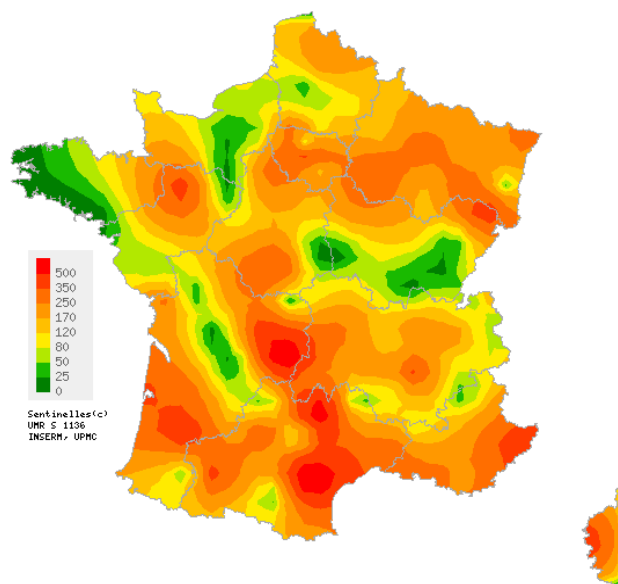
The samples were analyzed by the CNR (Coordinating center: Institut Pasteur - Paris, associated center: Hospices civils de Lyon), and the laboratory of Virology at the University of Corsica.

**Forecast:** according to the forecast model based on historical data, and on medication deliveries (IQVIA research partnership), the forecast models indicate that the ILI activity will rise or remain stable in the upcoming weeks (see the graph hereafter).

[Santé publique France weekly influenza report \(in french\).](#)  
[More information about influenza-like illness Sentinelles surveillance.](#)  
[Information about Sentinelles network statistical methods \(in french\).](#)

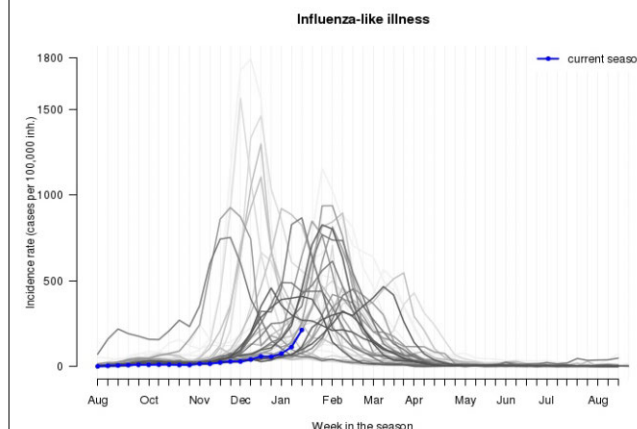


Consolidated data for the last 4 weeks



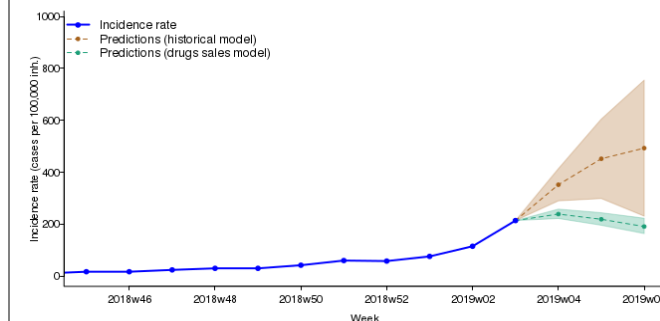
Map of spatial data interpolation based on influenza-like illness incidence rates at the « département » (NUTS 3) level (per 100,000 inhabitants),

Sentinelles general practitioners, 2019w03  
Maps available at <http://www.sentiweb.fr>



Incidence rate of influenza-like illness since 1984 (per 100,000 inhabitants),  
Sentinelles general practitioners.

In Blue: season 2018-19/ In gray: seasons from 1984-85 to 2017-18  
(the clearer the curve the older the data)



Predicted incidence rate for the next three weeks  
based on a forecast model on historical data and on drug sales  
Sentinelles general practitioners

Sentinelles network report from 01/23/2019, n° 2019w03 (data from 01/14/2019 to 01/20/2019)

## Acute diarrhea

### High Activity in general practice

Sentinel physicians monitor the number of acute diarrhea seen in consultations (defined by recent acute diarrhea (at least 3 daily watery or nearly so stools, dating less than 14 days, motivating consultation).

**Clinical monitoring:** in metropolitan France, last week (2019w03), the incidence rate of acute diarrhea seen in general practice was estimated at 181 cases per 100,000 inhabitants (95% CI [164 ; 198]), corresponding to 119,000 new cases, **above** the epidemic threshold (172 cases per 100,000), for the second consecutive week. However, this rate corresponds to unconsolidated data and could fall below the epidemic threshold once all data have been transmitted by the Sentinel physicians.

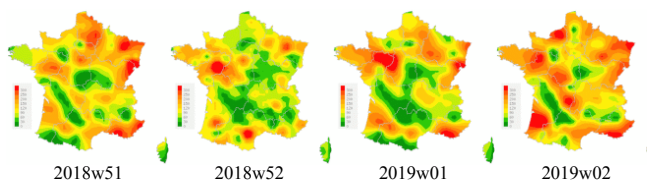
**At the regional level**, the highest incidence rates were noted in: Provence-Alpes-Côte d'Azur (253 cases per 100,000 inhabitants, 95% CI [157 ; 349]), Centre-Val de Loire (222, 95% CI [159 ; 285]) and Hauts-de-France (210, 95% CI [141 ; 279]) (the regional data are presented at the end of this newsletter).

**Regarding the cases reported** last week, the median age was 23 years (1 months to 92 years). Males accounted for 45% of the cases. These cases showed no particular sign of severity: the percentage of hospitalization was estimated at 0.5% (95% CI [0.0 ; 1.3]).

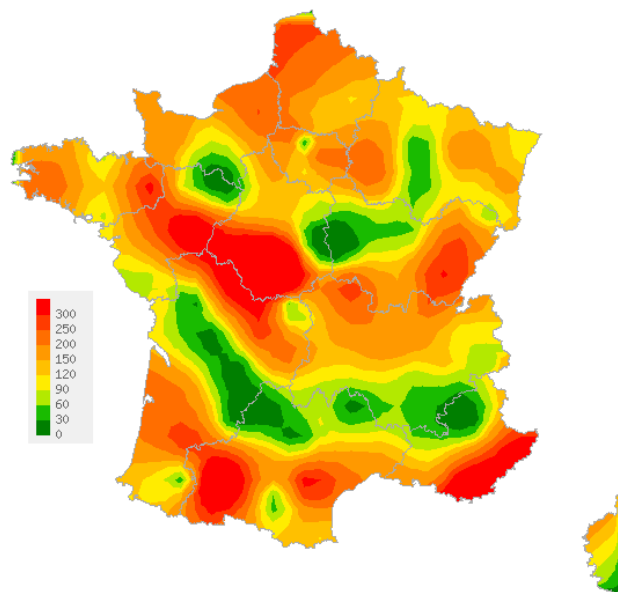
**Forecast:** according to the forecast model based on historical data, the level of activity of acute diarrhea should remain stable and close to the epidemic threshold in the upcoming weeks (see the graph hereafter).

[More information about acute diarrhea Sentinelles surveillance](#)

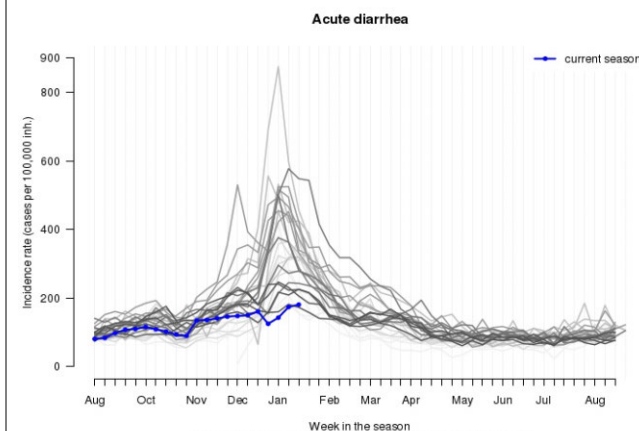
[Information about Sentinelles network statistical methods \(in french\)](#)



Consolidated data for the last 4 weeks

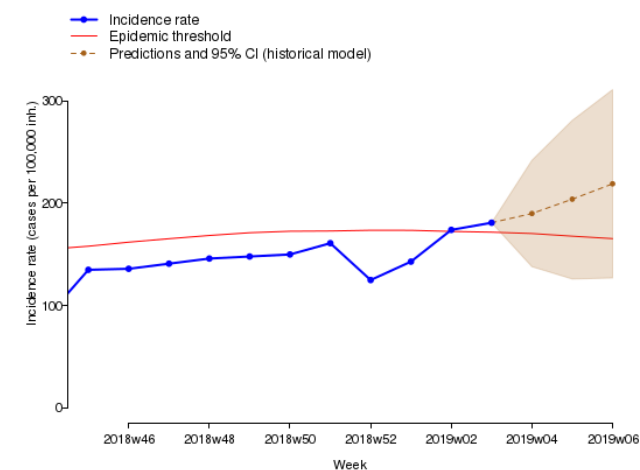


Map of spatial data interpolation  
based on acute diarrhea incidence rates  
at the « département » (NUTS 3) level (per 100,000 inhabitants),  
Sentinelles general practitioners, 2019w03  
[Maps available at http://www.sentiweb.fr](http://www.sentiweb.fr)



Incidence rate of acute diarrhea since 1990 (per 100,000 inhabitants),  
Sentinelles general practitioners.

In Blue : season 2018-19 / In gray : seasons from 1990-91 to 2017-18  
(the clearer the curve the older the data)



Predicted acute diarrhea incidence rate for the next three weeks  
based on a forecast model on historical data  
Sentinelles general practitioners

Sentinelles network report from 01/23/2019, n° 2019w03 (data from 01/14/2019 to 01/20/2019)

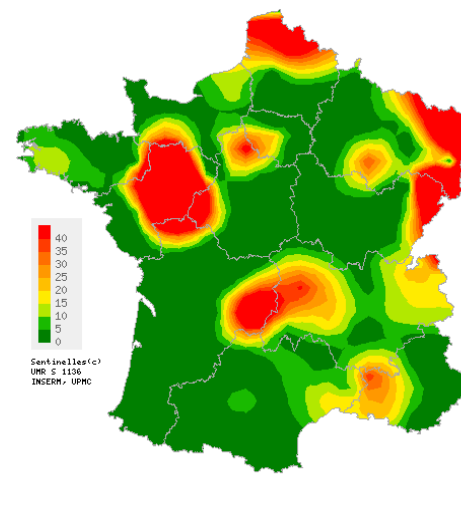
## Chickenpox

### Moderate to low activity in general practice

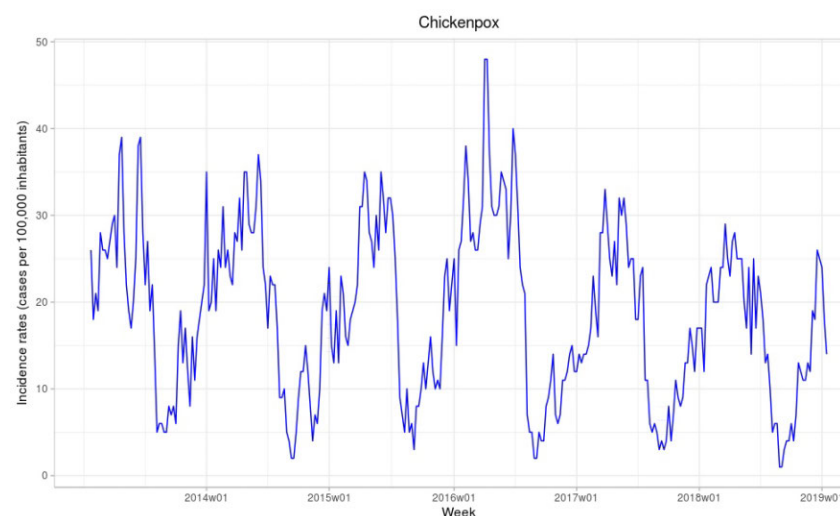
In metropolitan France, last week (2019w03), the incidence rate of Chickenpox seen in general practice was estimated at 14 cases per 100,000 inhabitants (95% CI [9 ; 19]).

Three regional clusters were noted, **high** in Pays de la Loire (64 cases per 100,000 inhabitants, 95% CI [0 ; 158]) and **moderate** in Hauts-de-France (39, 95% CI [8 ; 70]) and Grand Est (35, 95% CI [3 ; 67]) (the regional data are presented at the end of this report).

[More information about this surveillance](#)  
[Information about Sentinelles network statistical methods \(in french\)](#)



Map of spatial data interpolation based on chickenpox incidence rates at the « département » (NUTS 3) level (per 100 000 inhabitants), Sentinelles general practitioners, 2019w03  
[Maps available at http://www.sentiweb.fr](http://www.sentiweb.fr)



Chickenpox incidence rate  
(per 100,000 inhabitants), Sentinelles general practitioners

National incidence rates (per 100,000 inhabitants) over the past 3 weeks	2019w03 (non consolidated)	2019w02	2019w01
	Incidence rate estimation [95% confidence interval]	Incidence rate estimation [95% confidence interval]	Incidence rate estimation [95% confidence interval]
INFLUENZA-LIKE ILLNESS	214 [195 ; 233]	115 [103 ; 127]	76 [66 ; 86]
ACUTE DIARRHEA	181 [164 ; 198]	174 [159 ; 189]	143 [128 ; 158]
CHICKENPOX	14 [9 ; 19]	18 [13 ; 23]	24 [18 ; 30]

Table 1 : Incidence rates\* estimation with 95% confidence interval, for each indicator, in France, over the past 3 weeks.

Regional incidence rates for week 2019w03 (per 100,000 inhabitants)	INFLUENZA-LIKE ILLNESS	ACUTE DIARRHEA	CHICKENPOX
	Incidence rate estimation [95% confidence interval]	Incidence rate estimation [95% confidence interval]	Incidence rate estimation [95% confidence interval]
Auvergne-Rhône-Alpes	178 [138 ; 218]	162 [122 ; 202]	12 [2 ; 22]
Bourgogne-Franche-Comté	107 [62 ; 152]	142 [49 ; 235]	7 [0 ; 18]
Bretagne	96 [52 ; 140]	205 [141 ; 269]	6 [0 ; 17]
Centre-Val de Loire	197 [141 ; 253]	222 [159 ; 285]	12 [1 ; 23]
Corse	273 [163 ; 383]	147 [59 ; 235]	8 [0 ; 27]
Grand Est	210 [149 ; 271]	146 [100 ; 192]	35 [3 ; 67]
Hauts-de-France	169 [107 ; 231]	210 [141 ; 279]	39 [8 ; 70]
Ile-de-France	269 [206 ; 332]	146 [99 ; 193]	5 [0 ; 12]
Normandie	73 [30 ; 116]	188 [116 ; 260]	5 [0 ; 20]
Nouvelle-Aquitaine	216 [153 ; 279]	145 [92 ; 198]	4 [0 ; 11]
Occitanie	297 [228 ; 366]	169 [117 ; 221]	7 [0 ; 17]
Pays de la Loire	129 [28 ; 230]	194 [57 ; 331]	64 [0 ; 158]
Provence-Alpes-Côte d'Azur	269 [175 ; 363]	253 [157 ; 349]	15 [0 ; 37]

Table 2 : Incidence rates\* estimation with 95% confidence interval, for each indicator, for each French region, for week 2019w03.

<p align="center"><b>Réseau Sentinelles</b>  <b>Inserm - Sorbonne Université UMR-S 1136</b>  <b>Institut Pierre Louis d'Epidémiologie et de Santé Publique (IPLESP)</b>  <b>Sorbonne-Université, site Saint-Antoine</b>  <b>27, rue Chaligny / 75571 Paris cedex 12</b>  Phone : 01 44 73 84 35 / Fax : 01 44 73 84 54  Email : <a href="mailto:sentinelles@upmc.fr">sentinelles@upmc.fr</a></p> <p align="center"><i>The " Réseau Sentinelles" or Sentinelles Network  (a.k.a. French Communicable Diseases Computer Network)  is a network of 1,463 physicians working throughout the metropolitan regions of  France including 600 involved in the clinical surveillance activity  (484 general practitioners and 116 pediatricians)  enabling the achievement of weekly newsletters.  This network is developed within an agreement  between Inserm, Sorbonne Université and Santé publique France.</i></p> <p><b>Head of RS:</b> Thomas Hanslik  <b>Deputy head of RS:</b> Thierry Blanchon  <b>Monitoring managers:</b> Marion Debin, Caroline Guerrisi, Louise Rossignol,  Laetitia Vaillant  <b>Information systems, biostatistics:</b> Corentin Hervé, Titouan Launay, Cécile  Souty, Clément Turbelin, Ana Vilcu  <b>Publication:</b> Yves Dorléans, Corentin Hervé</p>		
Regional branch	Head of network	Regional manager
Auvergne-Rhône-Alpes / Bourgogne-Franche-Comté	Marianne Sarazin	Caroline Liotard
Centre Val de Loire / Hauts-de-France	Thierry Prazuck	Charly Kengne- Kuetche Mathieu Rivière
Ile-de-France	Mathilde François	Lucie Fournier
Méditerranée : Corse / Occitanie / Provence-Alpes-Côte d'Azur	Jean-Pierre Amoros Alessandra Falchi	Shirley Masse Natacha Villechenaud

<p><b>Need information ?</b></p> <p>You can visit our website :</p> <p><a href="http://www.sentiweb.fr">http://www.sentiweb.fr</a></p> <p>These information are also available by using our RSS feed :  <a href="http://www.sentiweb.fr/rss/fr/en">http://www.sentiweb.fr/rss/fr/en</a></p> <p>You can also contact us using the above contact information.</p>
---

\* Incidence rates estimate are calculated on the activity of general practitioners.